

Remote Management, Monitoring, and Verification Tools & Service Providers



Key



(Remote) Management Information System (R/MIS)



Data Sources (incl. Open Data and Big Data)



Maintenance Management Systems (MMS)



Mobile Data Collection Tools (MDC)



Crowdsourcing Tools



Cameras (Terrestrial Observation)



Earth Observation via Satellites



Drones / UAV (Airborne Observation)



Geospatial Tools / GIS



Sensors / SmartMeters (Internet of Things)



Building Information Modeling



Collaboration Tools



eLearning Tools

Legal Disclaimer

The information in this booklet was provided by and for participants of the International Virtual Conference on “Leveraging Remote Management, Monitoring, and Verification (RMMV) for improving resilience and impact in times of crises” on 8th and 9th February, 2023 organized by KfW and BMZ.

The tools and services described may serve practitioners in preparing and implementing Humanitarian and International Development Cooperation projects remotely.

All conference participants were invited to join this booklet. The information for this booklet was provided by the tools and services providers themselves, not by KfW.

The selection of the providers and the provision of the booklet content was not made by KfW and thus does not constitute any form of legal, technical, or other advice or procurement recommendation and does not purport to replace such legal, technical, or other advice for a specific project or question by a user.

Before entering into any of the activities contemplated in this booklet, any booklet user should first seek advice for themselves as they deem necessary and should not solely rely upon the material and information given herein as a basis for making any business, legal, or other decision. Any use of the material or information provided in this booklet for specific projects is at the user's own risk.

Due to the general and non-comprehensive nature of booklet, conclusions drawn from them always need to be adjusted to the specific needs and design of the respective project context. KfW can therefore not be held liable for any use and any conclusions drawn from this booklet.

KfW makes no representation and excludes to the fullest extent permitted by applicable law any responsibility or liability for this booklet, its content, or any errors or omissions made in the content of this booklet. The information contained in this booklet is provided for information purposes only and on an “as is” basis with no guarantees of completeness, accuracy, usefulness, or timeliness.

Tools & Service Providers in alphabetical order

- 4 60 Decibels**
Gets you actionable, benchmarked social performance data, gathered from (and by) real human beings
- 6 ActivityInfo**
Information management software for humanitarian and development operations
- 8 AIDONIC**
Adapts Web3 technologies for Remote Management, Monitoring and Verification in crises response
- 10 CartONG**
Leverage data, empower organizations, enable change
- 12 Conflict Management Consulting (CMC)**
Enhancing M&E in Hard-to-Reach Areas through Combined Field and Remote Sensing Techniques
- 14 DECIRIS**
A web application for site inspection and remote monitoring
- 16 engageSPARK**
Survey and message hard-to-reach populations globally – at scale
- 18 GAF AG**
Leveraging Earth Observation based services for remote monitoring and informed decision making
- 20 Geominds**
Data Driven Decisions (DDD) made easy with Geospatial Technology
- 22 GFA Consulting Group**
DACOTA – Customizable open source RMMV system
- 24 GOPA Infra GmbH**
Integrated cloud based RMMV System, utilizing Dashboards and 360° video captures for site supervision
- 26 iMMAP**
Humanitarian Spatial Data Center: Improving humanitarian response with geospatial data
- 28 Integrity Action**
Demanding integrity in public goods and service delivery: Citizens monitor. Everyone wins
- 30 International Rescue Committee**
ROSA – Remote Offered Skills Building Application: an innovative approach to capacity building for GBV responders
- 32 Koltiva**
Enabling Global Supply Chains to be Inclusive, Climate-Smart, and Traceable
- 34 LiveEO**
Helps supply chains turn deforestation-free with timely alerts based on satellite imagery
- 36 Mainlevel Consulting AG**
Mainlevel CONNECT Data Suite – Powerful data management made easy
- 38 RIWI**
Real-time Interactive Worldwide Intelligence
- 40 Talk to Loop**
Loop – Feedback and complaints reporting tool
- 42 The Cynefin Company**
SenseMaker®
- 44 The Open Data Company**
Reach more Impact using Open Aid Data on the AIDA platform
- 46 TolaData GmbH**
A digital tool making M&E simple, effective and impactful for donors and their partners
- 48 Verify.earth**
Your digital MRV for nature
- 50 WeRobotics**
Flying Labs Network, the global network of local drone & data experts for social good

60 Decibels

Gets you actionable, benchmarked social performance data, gathered from (and by) real human beings



Name of Organisation

60 Decibels

RMMV Tool(s) and/or Service(s) provided

- (Remote) Management Information Systems or Maintenance Management Systems
- Mobile Data Collection Tools

Description of your RMMV tool(s) and/or service(s)

60 Decibels is a global, tech-enabled impact measurement company that brings speed and repeatability to social impact measurement and customer insights.

We provide genuine benchmarks of impact performance, enabling organizations to understand impact relative to peers and set performance targets. Our network consists of 900+ researchers in 70+ countries, and we have worked with more than 800 of the world's leading impact investors, companies, foundations, corporations, NGOs, and public sector organizations.

Our expertise spans a wide range of sectors, from agriculture to quality jobs. In 2021, we launched our pioneering 60 Decibels Microfinance Index, which surveyed nearly 18,000 clients to track the comparative impact performance of 72 MFIs across the globe. 60 Decibels makes it easy to listen to the people who matter most..

Regional experience

- ✓ Asia and Pacific
- ✓ Europe
- ✓ Middle East and North Africa
- ✓ Sub-Saharan Africa
- ✓ America and Caribbean

Your sector(s) experience:

- ✓ Energy and Climate
- ✓ Economic growth, Employment, Financial System Development
- ✓ Rural Development, Agriculture, Biodiversity, Seas
- ✓ Education & Vocation Training
- ✓ Health & Social Protection, Poverty
- ✓ Digitalisation/Digital Transformation

Expertise in RMMV institutional approaches

- ✓ Monitoring led by Project Executing Agency
- ✓ Monitoring led by Implementation Consultant
- ✓ Third-Party Monitoring
- ✓ Involving Target Groups/Project-Affected People
- ✓ Engaging other partners (e.g. other donors, NGOs/UN operating in the same area, researchers etc.)

Experience using RMMV tools/technologies and/or data sources

- ✓ (Remote) Management Information Systems (R/MIS) or Maintenance Management Systems
- ✓ Mobile Data Collection Tools



60 Decibels works with over 1,000 researchers across 79 countries who speak 189 languages to interview the people experiencing impact. In 2020, researchers interviewed 170,000 people. (Source: 60 Decibels)

For more info on the above categories

<https://www.kfw-entwicklungsbank.de/Service/Publications-Videos/Publications-by-topic/Digitalisation/Fact-Sheets/>

Contact

New York
335 Madison Avenue
New York, NY 10017
USA

www.60decibels.com

London
Somerset House, New Wing
Strand, London WC2R 1LA
England

Nairobi
7th Floor, Pinetree Plaza
Kaburu Drive
Nairobi, Kenya

Bengaluru
WeWork Prestige Central
36 Infantry Road, Shivaji Nagar
Bengaluru, India

Tom Adams
tom@60decibels.com

60 _ decibels

ActivityInfo

Information management software for humanitarian and development operations



Name of Organisation

BeDataDriven B.V.

RMMV Tool(s) and/or Service(s) provided

Information management software for humanitarian and development operations, including application for Mobile Data Collection Tools.

Description of your RMMV tool(s) and/or service(s)

ActivityInfo is an information management platform used for monitoring & evaluation, humanitarian coordination and case management. For over a decade, the ActivityInfo team has been supporting humanitarian operations and development programmes worldwide with a secure, flexible and cost-effective solution for data collection, data management and analysis.

ActivityInfo is used to centralize and standardize data collection, monitor and display the impact of activities while maintaining complete control on data access and changes.

Non-technical colleagues can quickly start tracking key indicators from project outputs to strategic impact using a user-friendly database and form builder, an intuitive data collection interface and various reporting capabilities.

Using the ActivityInfo mobile app to collect data online or offline, they save time and avoid errors from moving data between tools. Then, built-in analysis tools or integrations with other software allow for rich insights within minutes.

Regional experience

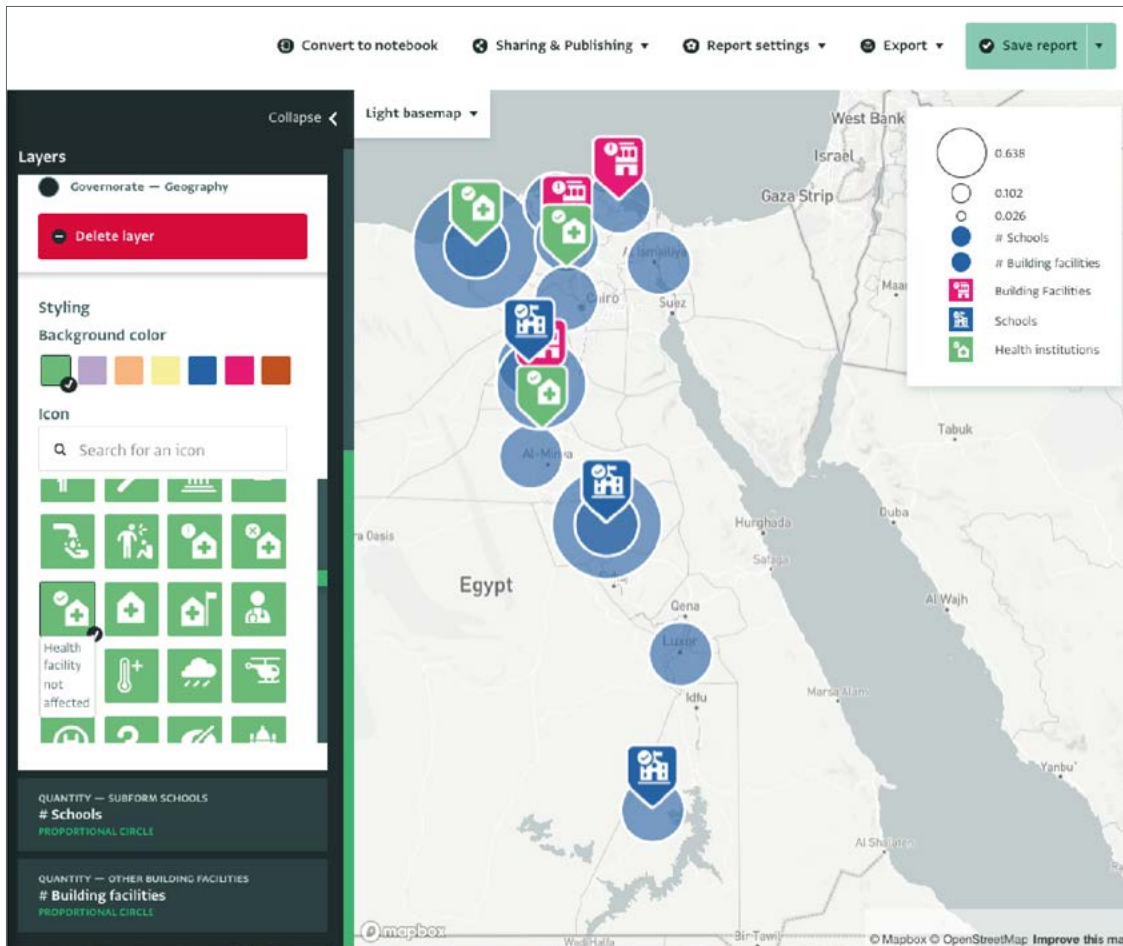
- ✓ Asia and Pacific
- ✓ Europe
- ✓ Middle East and North Africa
- ✓ Sub-Saharan Africa
- ✓ America and Caribbean

Your sector(s) experience:

- ✓ Energy and Climate
- ✓ Economic growth, Employment, Financial System Development
- ✓ Rural Development, Agriculture, Biodiversity, Seas
- ✓ Education & Vocation Training
- ✓ Water, Urban development & Mobility
- ✓ Governance, Peace, Fragility and Forced Displacement, Humanitarian Assistance
- ✓ Health & Social Protection, Poverty
- ✓ Digitalisation/Digital Transformation

Expertise in RMMV institutional approaches

- ✓ Monitoring led by Project Executing Agency
- ✓ Monitoring led by Implementation Consultant
- ✓ Third-Party Monitoring
- ✓ Involving Target Groups/Project-Affected People
- ✓ Engaging other partners (e.g. other donors, NGOs/UN operating in the same area, researchers etc.)



Map report in the ActivityInfo platform. (Source: BeDataDriven)

Experience using RMMV tools/technologies and/or data sources

- ✓ (Remote) Management Information Systems (R/MIS) or Maintenance Management Systems
- ✓ Mobile Data Collection Tools
- ✓ Crowdsourcing Tools
- ✓ Cameras (Terrestrial Observation)
- ✓ Geospatial Tools & GIS
- ✓ Collaboration Tools
- ✓ Open Data Sources
- ✓ Big Data / Artificial Intelligence

For more info on the above categories

<https://www.kfw-entwicklungsbank.de/Service/Publications-Videos/Publications-by-topic/Digitalisation/Fact-Sheets/>

Project experience with KfW

Lebanon Crisis Response Plan

Contact

BeDataDriven B.V.
 Binckhorstlaan 36 unit C3.56
 2516 BE The Hague
 Netherlands

BeDataDriven
 Fay Kandylari
fay@bedatadriven.com

www.activityinfo.org/
www.bedatadriven.com/



AIDONIC

Adapts Web3 technologies for Remote Management, Monitoring and Verification in crises response



Name of Organisation

AIDONIC

RMMV Tool(s) and/or Service(s) provided

- Blockchain-powered payments and fund disbursement with real-time status monitoring
- Two-way communication with participants for notifications & redress
- GDPR-compliant data collection & storage of assessment, registration & evaluation
- Smart form builder & digital deployment
- NFT-based donation impact monitoring
- DAO-based humanitarian pooled funds

Description of your RMMV tool(s) and/or service(s)

AIDONIC is a Swiss social enterprise adapting Web3 technologies to solve humanitarian challenges. Our Aid Management platform features permission-tiered access, fraud detection features, and proof-of-delivery receipts. Aid can be monitored, remotely & in real-time, and recorded on-chain for enhanced security and transparency.

Our new Impact Tracking tool uses non-fungible tokens to trace donation impact in the aid value-chain, providing enhanced precision and efficiency in reporting. APIs connect this data to any other solutions you're using, such as CRM software. Plus, all data on our platform is kept safe, secure and GDPR-compliant, encrypted in storage and transit.

We've been recognized by several industry awards for innovation and excellence and have seen adoption in the large and small crises by leading NGOs. Our competitive advantage is that we're a small group of humanitarians with over 35 years of collective experience responding to crises.

Regional experience

- ✓ Europe
- ✓ Middle East and North Africa
- ✓ Sub-Saharan Africa
- ✓ America and Caribbean

Your sector(s) experience:

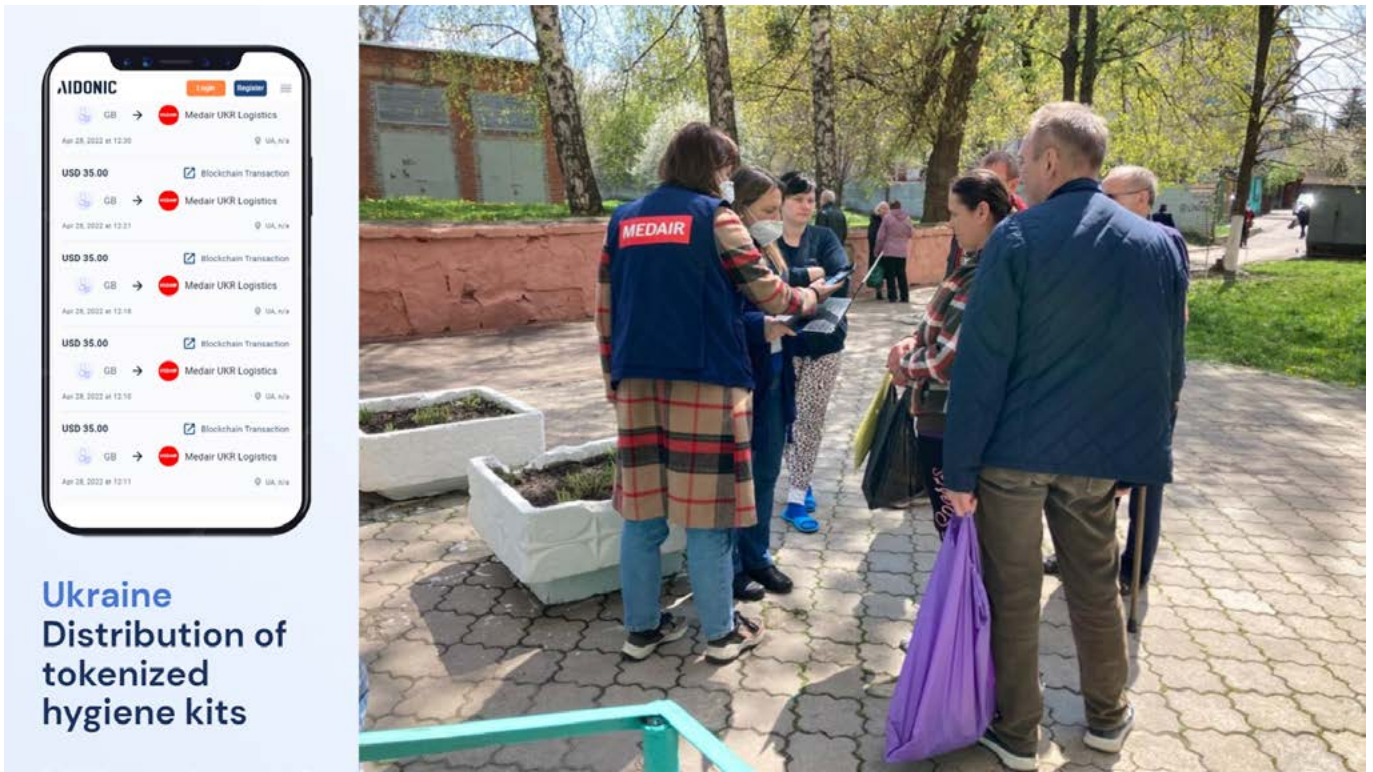
- ✓ Economic growth, Employment, Financial System Development
- ✓ Governance, Peace, Fragility and Forced Displacement, Humanitarian Assistance
- ✓ Digitalisation/Digital Transformation

Experience using RMMV tools/technologies and/or data sources

- ✓ (Remote) Management Information Systems (R/MIS) or Maintenance Management Systems
- ✓ Mobile Data Collection Tools
- ✓ Crowdsourcing Tools
- ✓ Collaboration Tools

For more info on the above categories

<https://www.kfw-entwicklungsbank.de/Service/Publications-Videos/Publications-by-topic/Digitalisation/Fact-Sheets/>



**Ukraine
Distribution of
tokenized
hygiene kits**

Ukraine: Distribution of tokenized hygiene kits.
(Source: AIDONIC)

Contact

AIDONIC
Baarerstrasse 125
6300 Zug
Switzerland

Joel Kaiser
Joel.kaiser@aidonic.io

<https://aidonic.io/>

AIDONIC

CartONG

Leverage data, empower organizations,
enable change



Name of Organisation

CartONG

RMMV Tool(s) and/or Service(s) provided

We are providing services around the full spectrum of information management, including Mobile Data Collection Tools, Crowdsourcing, Earth Observation, Collaboration, Open Data aspects, Geospatial Tools and GIS services

Released specifically for RMMV under pandemic conditions:

- [Choices of software](#)
- [Tutorials on how to adapt to remote monitoring](#)
- [Collation of relevant case studies](#)

Description of your RMMV tool(s) and/or service(s)

CartONG is a H2H (Humanitarian to Humanitarian) support NGO specialized in Information Management (IM) and which aims to put data – in particular geographic data – at the service of humanitarian, development and social action projects. Our work is dedicated to better understanding the challenges faced in field environments and to improve the quality and accountability of field activities, especially through better needs assessment and monitoring and evaluation.

As a multidisciplinary resource and expertise center, we support our partners' organizational strategies and field operations across the whole range of Information Management expertise. Our teams also support the sector as a whole by producing documentation, building capacity and raising awareness about the technical, strategic and ethical challenges of digital technologies. Created in 2006 and based in Chambéry, CartONG is a French non-profit organization. We have endorsed the Principles for Digital Development and are members of the H2H and Coordination Sud networks – via the CHD.

Regional experience

- ✓ Asia and Pacific
- ✓ Europe
- ✓ Middle East and North Africa
- ✓ Sub-Saharan Africa
- ✓ America and Caribbean

Your sector(s) experience:

- ✓ Digitalisation/Digital Transformation

Expertise in RMMV institutional approaches

- ✓ Monitoring led by Implementation Consultant
 - ✓ Engaging other partners (e.g. other donors, NGOs/UN operating in the same area, researchers etc.)
-



Photo taken during a field mission in Mayotte (France) in support of Médecins du Monde during a participatory mapping workshop in an informal settlement of the island. (Source: CartONG)

Experience using RMMV tools/technologies and/or data sources

- ✓ Mobile Data Collection Tools
- ✓ Crowdsourcing Tools
- ✓ Earth Observation via Satellites
- ✓ Drones/UAV (Airborne Observation)
- ✓ Geospatial Tools & GIS
- ✓ Collaboration Tools
- ✓ Open Data Sources

For more info on the above categories

<https://www.kfw-entwicklungsbank.de/Service/Publications-Videos/Publications-by-topic/Digitalisation/Fact-Sheets/>

Project experience with KfW

None with KfW, several with GIZ

Contact

CartONG
23 boulevard du Musée
73000 Chambéry
France

Sandra Sudhoff
S_sudhoff@cartong.org

<https://cartong.org>



Leverage **d**ata
Empower **o**rganizations
Enable **c**hange

Conflict Management Consulting (CMC)

Enhancing M&E in Hard-to-Reach Areas through Combined Field and Remote Sensing Techniques



Name of Organisation

Conflict Management Consulting (CMC)

RMMV Tool(s) and/or Service(s) provided

GIS, data analysis and visualization, remote data collection as well as AI-based remote sensing technology with EO satellite data and SR for better information gathering in conflict-affected areas.

Description of your RMMV tool(s) and/or service(s)

CMC provides a range of RMMV services that include the use of GIS tools for capturing, analyzing, managing and presenting spatial or geographical data. Additionally, we use data analysis and visualization tools, remote data collection tools and AI-based remote sensing technology with EO satellite data and SR to improve information gathering in conflict-affected areas.

Regional experience

- ✓ Asia and Pacific
- ✓ Europe
- ✓ Middle East and North Africa
- ✓ Sub-Saharan Africa
- ✓ America and Caribbean

Your sector(s) experience:

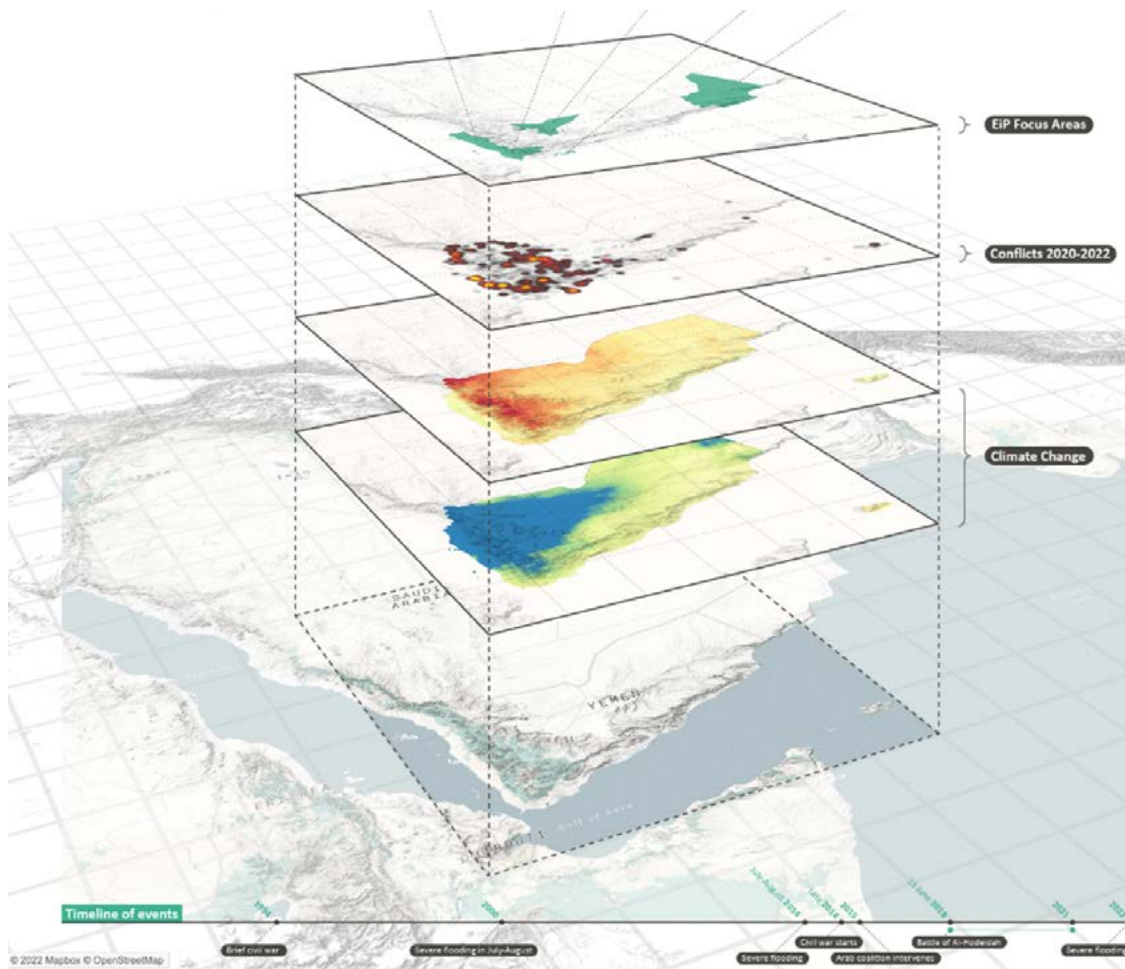
- ✓ Energy and Climate
- ✓ Economic growth, Employment, Financial System Development
- ✓ Rural Development, Agriculture, Biodiversity, Seas
- ✓ Education & Vocation Training
- ✓ Governance, Peace, Fragility and Forced Displacement, Humanitarian Assistance
- ✓ Digitalisation/Digital Transformation

Expertise in RMMV institutional approaches

- ✓ Monitoring led by Project Executing Agency
- ✓ Monitoring led by Implementation Consultant
- ✓ Third-Party Monitoring
- ✓ Involving Target Groups/Project-Affected People
- ✓ Engaging other partners (e.g. other donors, NGOs/UN operating in the same area, researchers etc.)

Experience using RMMV tools/technologies and/or data sources

- ✓ (Remote) Management Information Systems (R/MIS) or Maintenance Management Systems
- ✓ Mobile Data Collection Tools
- ✓ Crowdsourcing Tools
- ✓ Cameras (Terrestrial Observation)
- ✓ Earth Observation via Satellites
- ✓ Drones/UAV (Airborne Observation)
- ✓ Geospatial Tools & GIS
- ✓ Collaboration Tools
- ✓ eLearning Tools
- ✓ Open Data Sources
- ✓ Big Data/Artificial Intelligence



GIS and Remote Sensing products used for analysis and visualizations.
 (Source: CMC)

For more info on the above categories

<https://www.kfw-entwicklungsbank.de/Service/Publications-Videos/Publications-by-topic/Digitalisation/Fact-Sheets/>

Project experience with KfW

Monitoring & Evaluation Manual for the KfW Co-financed “AUC Funding Window for Cross-border Reconstruction & Development Measures”

Contact

CMC
 Rue du Noyer 282
 B-1030 Brussels
 Belgium
 Kristian Svendsen
Kristian.svendsen@cmc-consult.eu

www.cmc-consulting.org/



DECIRIS

A web application for site inspection and remote monitoring



Name of Organisation

Web application: DECIRIS

Consulting services: MAZURIS

RMMV Tool(s) and/or Service(s) provided

Tool: DECIRIS is a web application to conduct site inspections when physically present on site or remotely via the integrated visio conference feature.

Services: The sister company MAZURIS offers a range of consulting services on the topic of environmental, social, health and safety management including physical site visits, capacity development as well as remote monitoring and inspection using the DECIRIS web application.

Description of your RMMV tool(s) and/or service(s)

DECIRIS: We developed a web application that allows for integrated risk management on the topics of health, safety, environmental, social, quality and more. It is designed to be flexible and intuitive in order to focus on the key deliverable: a report on the level of compliance against a given reference framework. The web app includes a set of supporting functionalities such as photo taking, geolocation, note taking, client signature, visio conferencing. In addition, our modern architecture allows for easy integration of new features based on the clients' needs.

MAZURIS: The web application was developed in order to support our consulting activity which is environmental, social, health and safety management. With 20 years of experience in this field (private sector and international development), MAZURIS develops and implements environmental and social management frameworks. This involves site visits in remote locations, for which the DECIRIS web application was developed.

Regional experience

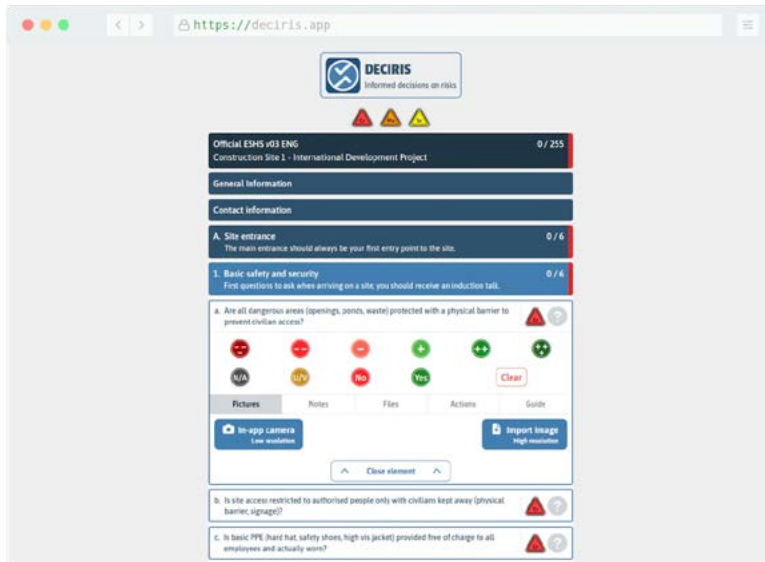
- ✓ Asia and Pacific
 - ✓ Europe
 - ✓ Middle East and North Africa
 - ✓ Sub-Saharan Africa
-

Your sector(s) experience:

- ✓ Energy and Climate
 - ✓ Economic growth, Employment, Financial System Development
 - ✓ Rural Development, Agriculture, Biodiversity, Seas
 - ✓ Education & Vocation Training
 - ✓ Water, Urban development & Mobility
 - ✓ Governance, Peace, Fragility and Forced Displacement, Humanitarian Assistance
 - ✓ Health & Social Protection, Poverty
 - ✓ Digitalisation/Digital Transformation
-

Expertise in RMMV institutional approaches

- ✓ Monitoring led by Project Executing Agency
 - ✓ Monitoring led by Implementation Consultant
 - ✓ Third-Party Monitoring
 - ✓ Engaging other partners (e.g. other donors, NGOs/UN operating in the same area, researchers etc.)
-



Assessment page of DECIRIS web application (Source: DECIRIS)

Experience using RMMV tools/technologies and/or data sources

- ✓ (Remote) Management Information Systems (R/MIS) or Maintenance Management Systems
- ✓ Mobile Data Collection Tools
- ✓ Cameras (Terrestrial Observation)
- ✓ Collaboration Tools

For more info on the above categories

<https://www.kfw-entwicklungsbank.de/Service/Publications-Videos/Publications-by-topic/Digitalisation/Fact-Sheets/>

Project experience with KfW

Consulting services provided by MAZURIS:

- Programme de Réhabilitation des Routes Rurales à Gao, Mali (Pistes pour la Paix, Phase II) [BMZ no. 202169159]. Development of an Environmental and Social Management Framework with two country visits and remote support. 80% remote and 20% field work.
- Stabilisation et réconciliation dans les États voisins du lac Tchad II (VPT) [BMZ no. 202140754]. Development of an Environmental and Social Management Framework with two country visits and remote support of 4 Environmental and Social Officers. 80% remote and 20% field work.
- Promotion du secteur privé à travers le Fonds National de Développement Agricole (FNDA) [BMZ no. 202101160]. Development of an Environmental and Social Management System based on World Bank ESS9 with two country visits and remote support. 80% remote and 20% field work.
- Consulting Services for the Monitoring of the project “Kabul Riverfront Transformation” (KARIT) [BMZ no. 209710302]. Development of an Environmental and Social Management Framework. Including capacity development of national staff and preparation of a focussed ESIA for a steel bridge. 100% remote.
- Regional Programme for the improvement of living conditions in Palestinian Refugee Camps in the Near East (REPAC III) [BMZ no. 201768282]. Development of an Environmental and Social Management Framework including 3 country visits to the refugee camps (Lebanon, Jordan, Gaza). 40% remote and 60% field work.

Contact

MAZURIS SASU
5 avenue Ingres
75016 Paris

www.deciris.com

DECIRIS SASU
9 rue des Colonnes
75002 Paris

Sébastien Frionnet
sebasiten.frionnet@mazuris.com



engageSPARK

Survey and message hard-to-reach populations globally – at scale



Name of Organisation

engageSPARK

RMMV Tool(s) and/or Service(s) provided

Self-service, cloud hosted platform for building and launching mobile interaction campaigns, including:

- IVR (Interactive Voice Response) Surveys
- SMS Surveys
- WhatsApp Surveys
- Airtime Top Ups (mobile recharge)
- Drip Campaigns (time-based series of messages, questions, and other actions)
- SMS Blasts
- Voice Call Blasts
- WhatsApp Messages
- CATI: computer-assisted telephone interviews (live phone surveys)
- 1:1 Chat/Conversations via SMS/WhatsApp/Calls
- Contact Management, including dynamic segmentation and custom fields
- Real-time reports/export data easily
- Robust APIs for developers
- User permissions for hiding personally identifiable information (PII)

Description of your RMMV tool(s) and/or service(s)

engageSPARK is a social enterprise that helps organizations engage with hard-to-reach populations across the globe – at scale.

Organizations use our self-service SaaS platform to educate, survey, inform, and incentivize their beneficiaries, customers, and staff via texts (SMS), calls (IVR), WhatsApp, and airtime topups in 175+ countries.

For instance, they use engageSPARK to send emergency communications to Ukrainian refugees in Moldova; conduct public health research in Colombia; and encourage youth to get tested for HIV in Kenya.

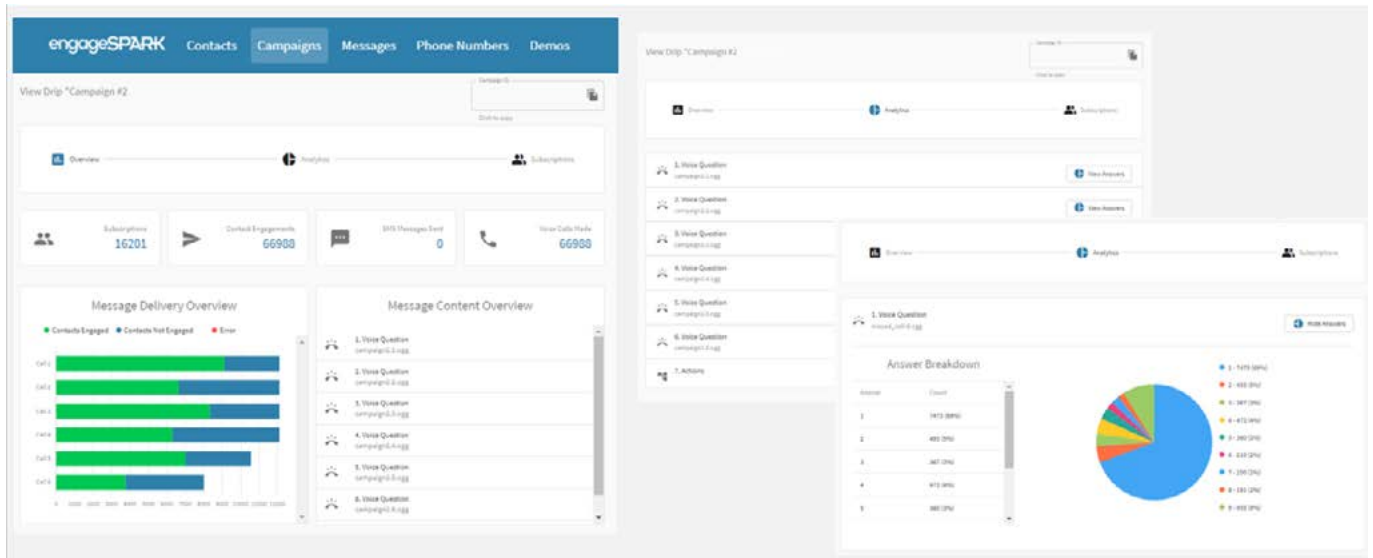
Our clients are research universities, NGOs, businesses, and UN agencies, including Johns Hopkins, Harvard, Catholic Relief Services, World Vision, Unilever, 60 Decibels, IOM, and UNICEF.

Regional experience

- ✓ Asia and Pacific
- ✓ Europe
- ✓ Middle East and North Africa
- ✓ Sub-Saharan Africa
- ✓ America and Caribbean

Your sector(s) experience:

- ✓ Energy and Climate
- ✓ Economic growth, Employment, Financial System Development
- ✓ Rural Development, Agriculture, Biodiversity, Seas
- ✓ Education & Vocation Training
- ✓ Water, Urban development & Mobility
- ✓ Governance, Peace, Fragility and Forced Displacement, Humanitarian Assistance
- ✓ Health & Social Protection, Poverty
- ✓ Digitalisation/Digital Transformation
- ✓ Other



Access data visualizations to track participant engagement in real-time.
 (Source: engageSPARK)

Expertise in RMMV institutional approaches

- ✓ Engaging other partners (e.g. other donors, NGOs/UN operating in the same area, researchers etc.)

Experience using RMMV tools/technologies and/or data sources

- ✓ (Remote) Management Information Systems (R/MIS) or Maintenance Management Systems
- ✓ Mobile Data Collection Tools
- ✓ Crowdsourcing Tools

For more info on the above categories

<https://www.kfw-entwicklungsbank.de/Service/Publications-Videos/Publications-by-topic/Digitalisation/Fact-Sheets/>

Contact

engageSPARK
 16192 Coastal Highway
 Lewes, DE 19958
 USA

www.engageSpark.com

Kickstart Ventures
 55 Paseo de Roxas
 Makati City
 Metro Manila, 1225
 Philippines

Avner Mizrahi
AvnerM@engageSPARK.com



GAF AG

Leveraging Earth Observation based services for remote monitoring and informed decision making



Name of Organisation

GAF AG

RMMV Tool(s) and/or Service(s) provided

- Data brokering
- Web portals — “PaaS platform as a service“
- Tools and services, all other platforms
- Consultancy, research and development, capacity building

Description of your RMMV tool(s) and/or service(s)

- Spatial and Topical Data brokering: from tasking, reception, distribution and management over insitu data collection and analysis to end-user compatible distribution and presentation of products and services
- Web portals for direct user access to multisource EO data products, visualization, services and AI-based analysis
- Tools and services: smart interactive spatial data collection and analysis and dedicated solutions on all platforms (web, desktop, mobile)
- Advice, solutions, development, implementation and integration for specific data gaps and user needs, training

Regional experience





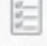





- ✓ Asia and Pacific
- ✓ Europe
- ✓ Middle East and North Africa
- ✓ Sub-Saharan Africa
- ✓ America and Caribbean

Your sector(s) experience:

- ✓ Energy and Climate
- ✓ Rural Development, Agriculture, Biodiversity, Seas
- ✓ Education & Vocation Training
- ✓ Water, Urban development & Mobility
- ✓ Governance, Peace, Fragility and Forced Displacement, Humanitarian Assistance
- ✓ Digitalisation/Digital Transformation
- ✓ Other

Expertise in RMMV institutional approaches

- ✓ Monitoring led by Project Executing Agency
 - ✓ Monitoring led by Implementation Consultant
 - ✓ Third-Party Monitoring
 - ✓ Involving Target Groups/Project-Affected People
 - ✓ Engaging other partners (e.g. other donors, NGOs/UN operating in the same area, researchers etc.)
-

 <p>User Management</p>  <p><small>Creation and management of user accounts and their roles and rights</small></p>	 <p>Satellite scene - Research</p>  <p><small>Research and ordering of satellite data from provider archives</small></p>	 <p>Order Management</p>  <p><small>Order creation and ordering of scenes and data images</small></p>	 <p>Visualization & Analysis</p>  <p><small>Scene visualization & analysis</small></p>	 <p>EO Based Service</p>  <p><small>Request, production, visualization and provision of further services</small></p>
<p>User management</p> <ul style="list-style-type: none"> ✓ Creation and management of user accounts and their roles and rights 	<p>Satellite Scene Search</p> <ul style="list-style-type: none"> ✓ Search of satellite data from provider archives of sensors according to your requirements ✓ With shopping cart system for archive data requests 	<p>Order management</p> <ul style="list-style-type: none"> ✓ Manage and provide an up-to-date overview of all orders ✓ Budget management and overview ✓ Placing order requests 	<p>Visualization & Analysis</p> <ul style="list-style-type: none"> ✓ Overview ✓ Open and download all available scenes in full resolution and run analysis 	<p>EO Based Service</p> <ul style="list-style-type: none"> ✓ Request, production, visualization and provision of further services

The GAF portal offers the functionalities of searching for data, submitting requests, processing orders, data provision, visualisation and provision of AOI – area of interest based (analytic) services. (Source: GAF AG)

Experience using RMMV tools/technologies and/or data sources

- ✓ Mobile Data Collection Tools
- ✓ Crowdsourcing Tools
- ✓ Cameras (Terrestrial Observation)
- ✓ Earth Observation via Satellites
- ✓ Drones/UAV (Airborne Observation)
- ✓ Geospatial Tools & GIS
- ✓ Collaboration Tools
- ✓ eLearning Tools
- ✓ Open Data Sources
- ✓ Big Data/Artificial Intelligence
- ✓ Other: Operational Service on Demand such as Natural & Hazard Emergency Services; high-precision Ground Motion Monitoring

For more info on the above categories

<https://www.kfw-entwicklungsbank.de/Service/Publications-Videos/Publications-by-topic/Digitalisation/Fact-Sheets/>

Project experience with KfW

- Senegal PROMOGEF
- RMMV Images & GIS for Afghanistan, Pakistan and Iraq
- Ecuador Deforestation and Fires Early Warning System
- REDD Cameroon
- Various project management and project implementation in Natural Resources sector inventories, monitoring and planning data generation e.g. in Pakistan, Benin, Mali, Nigeria, Tanzania, Yemen....

Contact

GAF AG
 Arnulfstr. 199
 80634 Munich
 Germany

Antje Küpper
antje.kuepper@gaf.de

www.gaf.de



an e-GEOS (ASI / Telespazio) Company

Geominds

Data Driven Decisions (DDD) made easy with Geospatial Technology



Name of Organisation

Geominds

RMMV Tool(s) and/or Service(s) provided

We provide solutions to complex real world problems using the geospatial technologies.

Description of your RMMV tool(s) and/or service(s)

GIS and Remote Sensing being the most cost effective way for monitoring remotely in an unbiased way we leverages them for the solutions complex problems. As we could go to the past using satellite imageries we could provide time series solutions faster and accurate.

Geominds provide services in various domains and which are broadly divided into Agriculture, Infrastructure, Mobility, Environmental and FOSS. We solve the problems by enabling remote monitoring and data management/visualisation which increases the efficiency and transparency of the system. Geominds focus on providing actionable insights enabling data driven solutions for the decision makers and civic society.

Open Source technology is the backbone of our solutions which makes it independent, cost effective and robust. We are expertised in community and people centric solutions through various crowd sourced projects.

Regional experience

- ✓ Asia and Pacific

Your sector(s) experience:

- ✓ Rural Development, Agriculture, Biodiversity, Seas
- ✓ Water, Urban development & Mobility
- ✓ Digitalisation/Digital Transformation
- ✓ Other

Expertise in RMMV institutional approaches

- ✓ Monitoring led by Implementation Consultant
- ✓ Third-Party Monitoring

Experience using RMMV tools/technologies and/or data sources

- ✓ (Remote) Management Information Systems (R/MIS) or Maintenance Management Systems
- ✓ Mobile Data Collection Tools
- ✓ Crowdsourcing Tools Tools
- ✓ Earth Observation via Satellites
- ✓ Drones/UAV (Airborne Observation)
- ✓ Geospatial Tools & GIS
- ✓ Building Information Modeling
- ✓ Open Data Sources
- ✓ Big Data/Artificial Intelligence


For more info on the above categories

<https://www.kfw-entwicklungsbank.de/Service/Publications-Videos/Publications-by-topic/Digitalisation/Fact-Sheets/>

Kozhikode LSGD Covid TPR

(7 day avg Test Positive Rate as of 15 May 2021)

Hover on the villages to get the name and previous week's TPR

May_2ndWk 17  45



Viz: ark Arjun, Map Data: OpendataKerala, Hex map: ODI Leeds • Stats: PRD, Kozhikode

Covid-19 Test Positive Rate Dashboard for the Decision makers of Kozhikode, Kerala.
(Source: Geominds)

Contact

Geominds
No5, 80 feet Road
Indranagar, Bengaluru
Karnataka 560075
India
Ark Arjun
arjun@geominds.in

<https://geominds.in>

Geominds
Your Link to GeoSpace

GFA Consulting Group

DACOTA – Customizable open source RMMV system



Name of Organisation

GFA Consulting Group

RMMV Tool(s) and/or Service(s) provided

DACOTA – Customizable open source RMMV system.

Description of your RMMV tool(s) and/or service(s)

GFA's remote management, monitoring and verification system DACOTA enables to track and manage project activities by

- seamlessly integrating data collection tools and access to the project database
- displaying project activities and key information on a customizable map
- visualizing key analytics and performance indicators on tailored dashboards

DACOTA is characterized by a modular architecture, high adaptability, as well as intuitive usability.

With this overall concept, the system permits project stakeholders to continuously monitor trends and progress without having to compromise on more detailed layers.

As DACOTA exclusively employs open-source components, no license costs are charged.

Recognizing data privacy-regulations, requirements of donor organizations, and potential geopolitical shifts, DACOTA can be installed on any server worldwide.

Regional experience

- ✓ Asia and Pacific
- ✓ Europe
- ✓ Middle East and North Africa
- ✓ Sub-Saharan Africa

Your sector(s) experience:

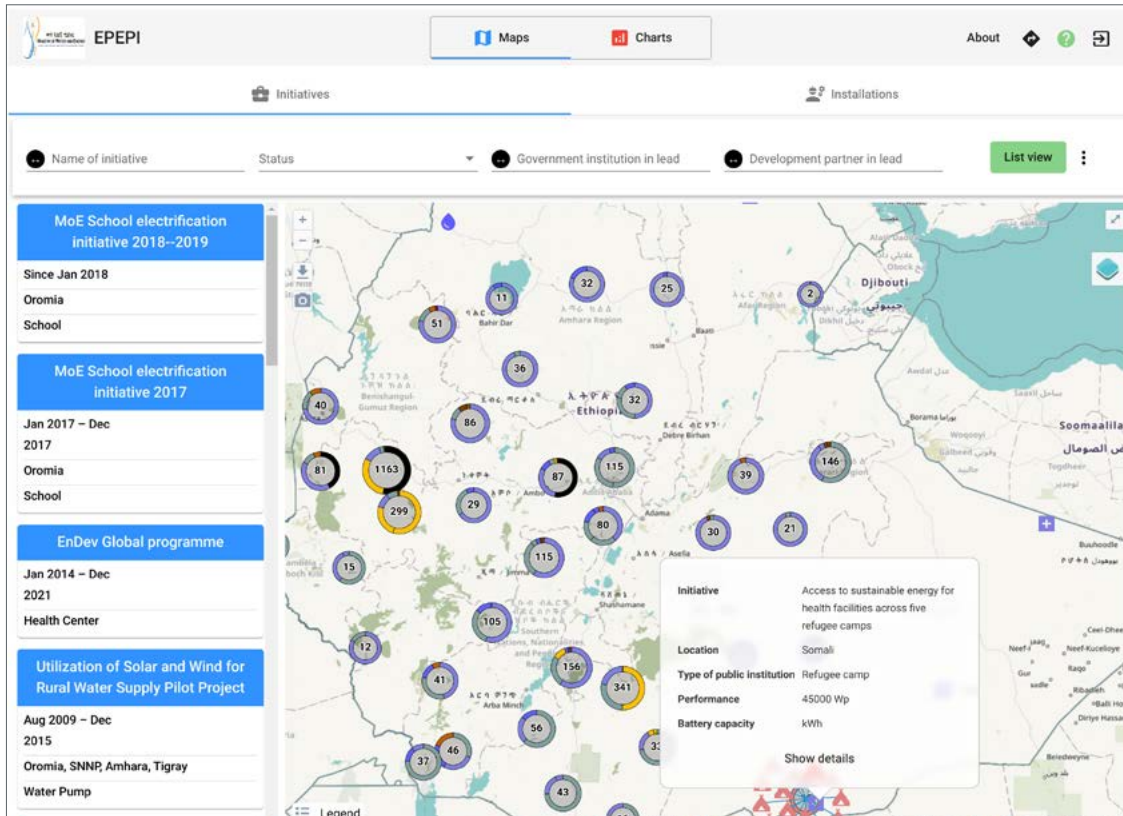
- ✓ Energy and Climate
- ✓ Economic growth, Employment, Financial System Development
- ✓ Rural Development, Agriculture, Biodiversity, Seas
- ✓ Education & Vocation Training
- ✓ Health & Social Protection, Poverty
- ✓ Digitalisation/Digital Transformation

Expertise in RMMV institutional approaches

- ✓ Monitoring led by Project Executing Agency
- ✓ Monitoring led by Implementation Consultant
- ✓ Involving Target Groups/Project-Affected People
- ✓ Engaging other partners (e.g. other donors, NGOs/UN operating in the same area, researchers etc.)

Experience using RMMV tools/technologies and/or data sources

- ✓ (Remote) Management Information Systems (R/MIS) or Maintenance Management Systems
 - ✓ Mobile Data Collection Tools
 - ✓ Earth Observation via Satellites
 - ✓ Geospatial Tools & GIS
 - ✓ Open Data Sources
-



User surface of the Remote Monitoring System DACOTA.
(Source GFA Consulting Group)

For more info on the above categories

<https://www.kfw-entwicklungsbank.de/Service/Publications-Videos/Publications-by-topic/Digitalisation/Fact-Sheets/>

Project experience with KfW

DACOTA has been implemented for RMMV in the following selected KfW projects:

- Program for Technical and Vocational Education and Employment for Young People (PAFPE), Togo, 2017–2024
- Sustainable Land Management IV, Ethiopia, 2016–2023
- Transboundary Biosphere Reserve Preservation, phase II, Albania, 2018–2021
- Support Program for Protected Areas, Georgia, 2014–2019

Contact

GFA Consulting Group
Thorsten Schoel
schoel@gfa-bis.de



GOPA Infra GmbH

Integrated cloud based RMMV System, utilizing Dashboards and 360° video captures for site supervision



Name of Organisation

GOPA Infra GmbH

RMMV Tool(s) and/or Service(s) provided

Integrated RMMV reporting approach via customized webpages (so called Communication Pages) utilizing interactive dashboards on financial KPIs, project progress, and ESHS-related information.

Data collection via different standard and customized software solutions and presentation of data utilizing business intelligence software.

Virtual site visits using 360 degrees video captures, document library and online collaboration platform with access for clients, partners, and colleagues.

Description of your RMMV tool(s) and/or service(s)

GOPA Infra has developed an approach utilizing various RMMV Tools and combining them in online accessible Communication Pages. Clients and Partners receive access to their specific content. Stakeholders can follow project progress on dashboards and virtual walks through project sites with the possibility of comparing the progress between different visits. Customized forms, apps and online surveys are utilized for data entry on smartphones, tablets, or computers. Data is synchronized via APIs and analysed as well as updated using interactive dashboards.

The document library allows for individual access rights per user group and provides possibilities for online collaboration on certain documents and data.

The technology is mainly built on standard software; data is stored on servers within the European Union, complying with European Data Protection Laws.

Regional experience

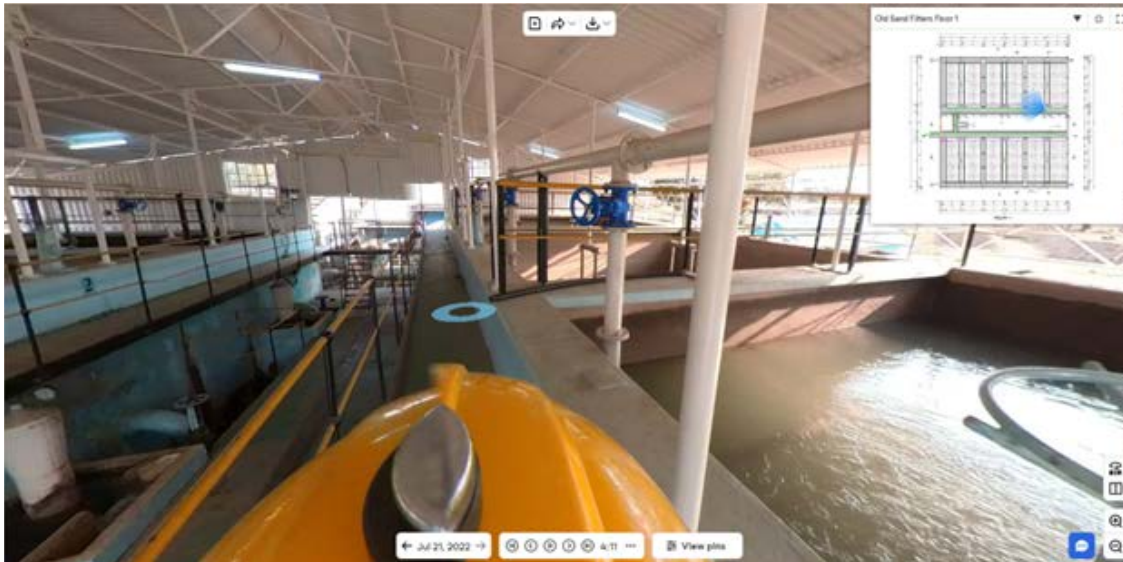
- ✓ Asia and Pacific
- ✓ Europe
- ✓ Middle East and North Africa
- ✓ Sub-Saharan Africa
- ✓ America and Caribbean

Your sector(s) experience:

- ✓ Energy and Climate
- ✓ Rural Development, Agriculture, Biodiversity, Seas
- ✓ Education & Vocation Training
- ✓ Water, Urban development & Mobility
- ✓ Governance, Peace, Fragility and Forced Displacement, Humanitarian Assistance
- ✓ Digitalisation/Digital Transformation

Expertise in RMMV institutional approaches

- ✓ Monitoring led by Project Executing Agency
- ✓ Monitoring led by Implementation Consultant
- ✓ Third-Party Monitoring
- ✓ Involving Target Groups/Project-Affected People
- ✓ Engaging other partners (e.g. other donors, NGOs/UN operating in the same area, researchers etc.)



360 degrees-footage from an actual construction project of GOPA Infra.
(Source: GOPA Infra GmbH)

Experience using RMMV tools/technologies and/or data sources

- ✓ (Remote) Management Information Systems (R/MIS) or Maintenance Management Systems
- ✓ Mobile Data Collection Tools
- ✓ Cameras (Terrestrial Observation)
- ✓ Earth Observation via Satellites
- ✓ Drones / UAV (Airborne Observation)
- ✓ Geospatial Tools & GIS
- ✓ Sensors / Smart Meters (Internet of Things)
- ✓ Collaboration Tools
- ✓ eLearning Tools
- ✓ Open Data Sources

For more info on the above categories

<https://www.kfw-entwicklungsbank.de/Service/Publications-Videos/Publications-by-topic/Digitalisation/Fact-Sheets/>

Project experience with KfW

Specific Projects with RMMV System:

- Mother and Child, Emergency Care (MCH) II-V in Tajikistan, BMZ Number 2012 70 313
- Quality Education Support Programme (QESP) - Phase II in Egypt, BMZ Number 2012 66 881
- Recycling and Disposal of Waste of Electrical and Electronic Equipment in an Environmentally Sound Way – Phase 1 in Ghana, BMZ Number 2016 65 074
- Promotion of Technical and Vocational Education and Training (HTU+ Programme) in Jordan, BMZ Number 2017.6783.9
- Programme d'Appui aux Collectivités Territoriales (PACT) in Mali, BMZ Number 2008 65 741

Contact

GOPA Infra GmbH
Hindenburgring 18
61348 Bad Homburg

Matthias Leibbrand
matthias.leibbrand@gopa-infra.de

Johannes Martin
johannes.martin@gopainfra.de

www.gopa-infra.de

GOPAInfra

iMMAP

Humanitarian Spatial Data Center: Improving humanitarian response with geospatial data



Name of Organisation

iMMAP

RMMV Tool(s) and/or Service(s) provided

- Information Systems
- Satellite Remote Sensing
- Participatory Mapping
- Mobile Data Collection Tools

Description of your RMMV tool(s) and/or service(s)

iMMAP has developed a Spatial Data Center for information management and disaster risk reduction. The platform is based on Geonode, an open source project, and has been customised to provide easy access to spatial datasets and disaster risk information relevant for humanitarian organisations.

The platform offers three core features:

- Mapping: A dynamic mapping interface that allows interoperability between geospatial layers and visualization.
- Dashboard production: A series of infographics derived by geolayers contained in the system and information retrieved by external sources (flood, drought, earthquake, etc.), presented in graphs and charts and ready to use and export.
- Catalog: A catalog that stores and facilitates the distribution of information products such as maps and datasets.

The Spatial Data Center has been deployed by iMMAP in Afghanistan and Colombia and is currently being upgraded with new features, data and risk analysis.

Regional experience

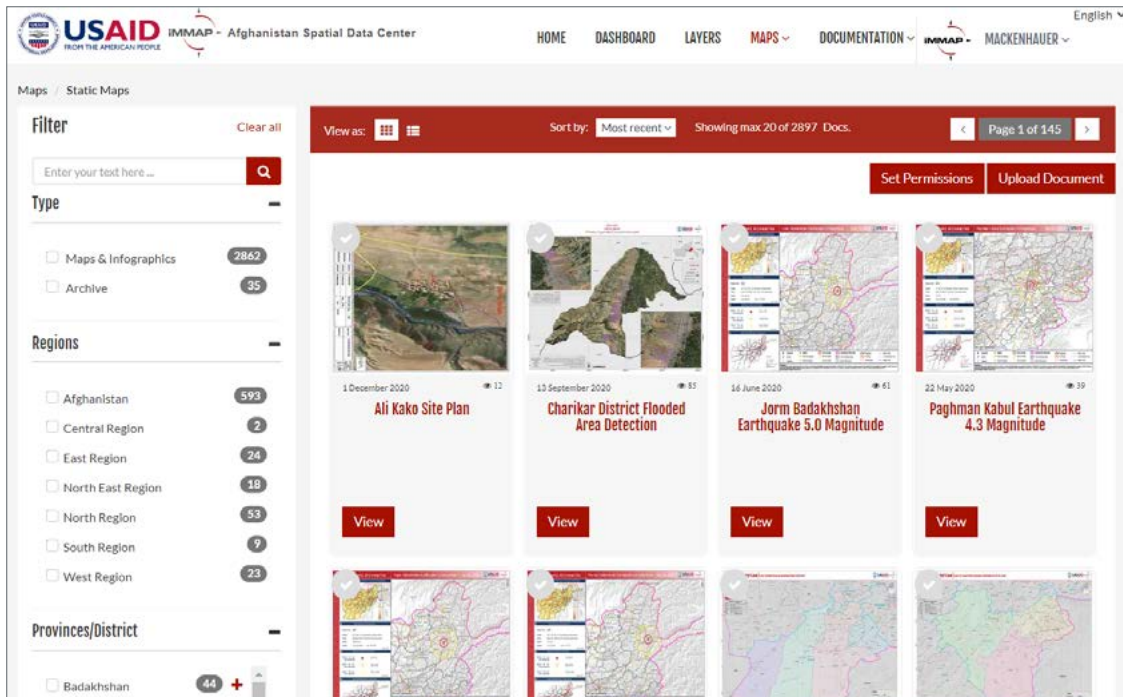
- ✓ Asia and Pacific
- ✓ Europe
- ✓ Middle East and North Africa
- ✓ Sub-Saharan Africa
- ✓ America and Caribbean

Your sector(s) experience:

- ✓ Digitalisation/Digital Transformation

Expertise in RMMV institutional approaches

- ✓ Monitoring led by Implementation Consultant
 - ✓ Third-Party Monitoring
 - ✓ Engaging other partners (e.g. other donors, NGOs/UN operating in the same area, researchers etc.)
-



The ASDC includes an extensive catalogue of maps made for the humanitarian response in Afghanistan. (Source: iMMAP)

Experience using RMMV tools/technologies and/or data sources

- ✓ Mobile Data Collection Tools
- ✓ Cameras (Terrestrial Observation)
- ✓ Earth Observation via Satellites
- ✓ Geospatial Tools & GIS
- ✓ Collaboration Tools
- ✓ Open Data Sources
- ✓ Big Data/Artificial Intelligence

For more info on the above categories

<https://www.kfw-entwicklungsbank.de/Service/Publications-Videos/Publications-by-topic/Digitalisation/Fact-Sheets/>

Contact

iMMAP

<https://immap.org>

Headquarter Washington D.C. office
 RRB/ITC 1300 Pennsylvania Avenue NW Suite 470
 Washington, D.C. 20004
 USA

Headquarter Marseille office
 10 rue Stanislas Torrents
 13006 Marseille
 France

Bertrand Rukundo
brukundo@immap.org



Integrity Action

Demanding integrity in public goods and service delivery: Citizens monitor. Everyone wins



Name of Organisation

Integrity Action

RMMV Tool(s) and/or Service(s) provided

DevelopmentCheck mobile app, citizen-centred accountability methodology.

Description of your RMMV tool(s) and/or service(s)

A water supply that broke months ago. Teachers not showing up for work in crumbling classrooms. Dispensaries without medicine. Many promises are made in the name of development. Not all are fulfilled.

Integrity Action changes this by equipping citizens to monitor local projects. We provide approaches and training that citizens use to find out what is promised, identify problems, gather community feedback, build relationships of trust, and work with those responsible to achieve solutions.

Tools include our mobile app DevelopmentCheck, which citizens have used to monitor over \$1 billion worth of spending in over 20 countries. It can be set up in any language, and is designed for use even by those who have never used a smartphone. Problems, fixes, and photos recorded in the app are displayed live online.

Since 2019, citizens have used the latest version of DevelopmentCheck to identify ~7,500 problems, and report fixes to over 5,700 of them. Read about some of them at: tinyurl.com/voice-data

Regional experience

- ✓ Asia and Pacific
- ✓ Europe
- ✓ Middle East and North Africa
- ✓ Sub-Saharan Africa

Your sector(s) experience:

- ✓ Energy and Climate
- ✓ Education & Vocation Training
- ✓ Water, Urban development & Mobility
- ✓ Health & Social Protection, Poverty

Expertise in RMMV institutional approaches

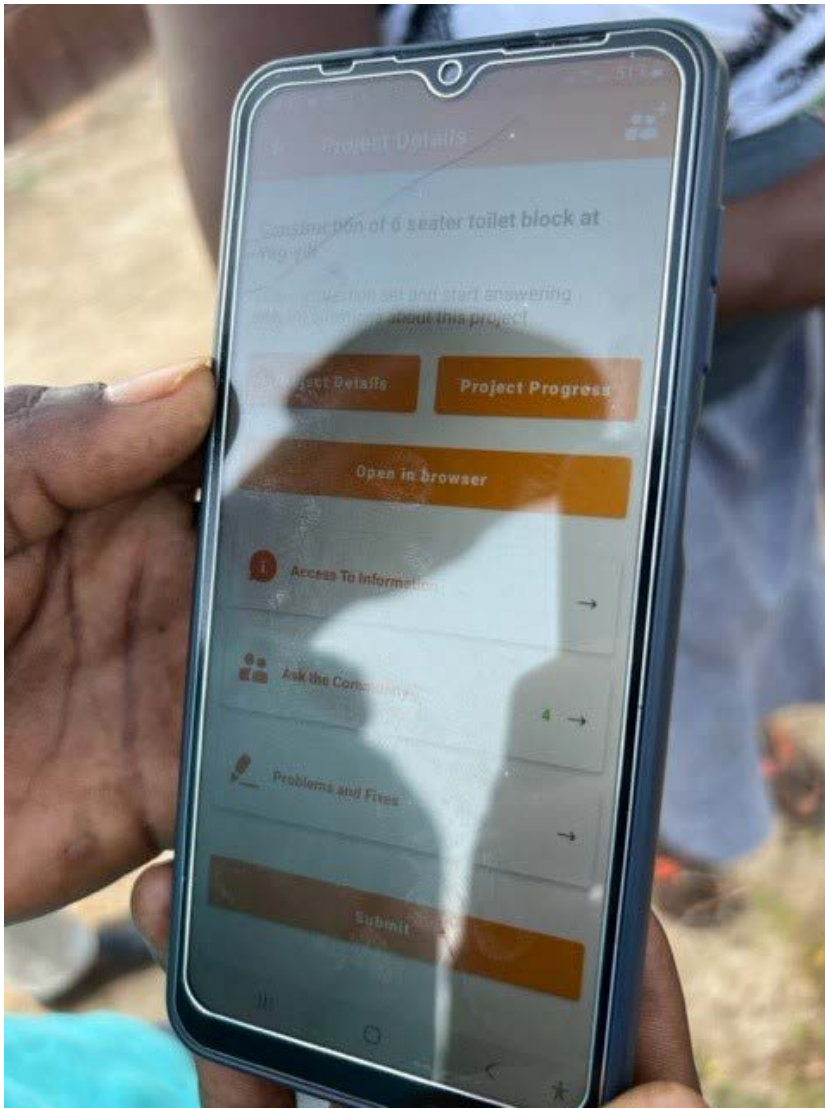
- ✓ Third-Party Monitoring
- ✓ Involving Target Groups/Project-Affected People
- ✓ Engaging other partners (e.g. other donors, NGOs/UN operating in the same area, researchers etc.)

Experience using RMMV tools/technologies and/or data sources

- ✓ Mobile Data Collection Tools
- ✓ Cameras (Terrestrial Observation)
- ✓ Geospatial Tools & GIS
- ✓ Collaboration Tools

For more info on the above categories

<https://www.kfw-entwicklungsbank.de/Service/Publications-Videos/Publications-by-topic/Digitalisation/Fact-Sheets/>



Development check.
(Source: Integrity Action)

Contact

Integrity Action
c/o Buzzacott
130 Wood St
London EC2V 6DL
United Kingdom

integrityaction.org

Annalisa Renna
annalisa.renna@integrityaction.org



International Rescue Committee

ROSA – Remote Offered Skills Building Application: an innovative approach to capacity building for GBV responders



Name of Organisation

International Rescue Committee

RMMV Tool(s) and/or Service(s) provided

ROSA is an innovative approach to capacity building through an interactive mobile application that can be utilized in remote, low-connectivity settings once it is downloaded to your phone.

Description of your RMMV tool(s) and/or service(s)

ROSA features include:

- Content with a variety in-depth articles to read
- Saved Reads to mark where you are or what you want to read next
- Badges to track your progress and efforts
- My Assessment where you can take assessments to test your knowledge and your scores
- Media that is optional and downloadable, such as videos and audio recordings
- Resources with additional guidance for GBV response programming
- And the Glossary that provides definitions of important terms for GBV responders to know and understand

Although not an end in itself, ROSA offers as a way to learn when you're not face to face.

Regional experience

- ✓ Asia and Pacific
- ✓ Middle East and North Africa
- ✓ Sub-Saharan Africa

Your sector(s) experience:

- ✓ Digitalisation/Digital Transformation

Experience using RMMV tools/technologies and/or data sources

- ✓ (Remote) Management Information Systems (R/MIS) or Maintenance Management Systems
- ✓ Mobile Data Collection Tools
- ✓ Cameras (Terrestrial Observation)
- ✓ eLearning Tools
- ✓ Open Data Sources

For more info on the above categories

<https://www.kfw-entwicklungsbank.de/Service/Publications-Videos/Publications-by-topic/Digitalisation/Fact-Sheets/>



ROSA in use by practitioners. (Source: IRC)

Contact

International Rescue Committee
122 East 42nd Street
New York, New York 10168-1289
USA

Kristy Crabtree
Kristy.crabtree@rescue.org

<https://gbvresponders.org/rosa-skill-building-application/#OrientationtotheRosaApp>

<https://www.rescue.org/>



Koltiva

Enabling Global Supply Chains to be Inclusive, Climate-Smart, and Traceable



Name of Organisation

Koltiva AG

RMMV Tool(s) and/or Service(s) provided

Our End-to-End Technology and Services Solutions for all Supply Chain Actors

- **KoltiTrace:** Koltiva's SaaS platform, an Integrated Multi Crop Platform for Responsible Businesses. Tech solution for MNC and MSME businesses to connect with their global upstream and downstream supply chains.
- **KoltiPay:** Responsible digital finance feature for the agriculture sector that helps producers access financial services from digital saving, ePayments, eBills, eLoans, and other digital transactions.
- **KoltiSkills:** Koltiva's 'boots-on-the-ground' extension services, supports companies to implement sustainable sourcing efforts in the first mile of global value chains.

Description of your RMMV tool(s) and/or service(s)

KoltiTrace: Koltiva's SaaS platform, an Integrated Multi Crop Platform for Responsible Businesses. Tech solution for MNC and MSME businesses to connect with their global upstream and downstream supply chains. Easy-to-use dashboards with geolocation and mapping features, farming data collection, producer's data profile, deforestation mapping, and GHG emissions feature, verified digital transactions from smallholder producers, collectors, processing facilities, retailers, to the end consumers. Protected and other restricted areas are displayed to allow monitoring of zero deforestation or zero natural ecosystem conversion commitments.

KoltiPay, Responsible digital finance feature for the agriculture sector that helps producers access financial services from digital saving, ePayments, eBills, eLoans, and other digital transactions between financial institutions, producers, collectors to inputs suppliers in the rural area. KoltiPay is fully integrated into Koltiva's end-to-end ecosystem, allowing businesses to distribute premium payments, allow farmers and collectors to do cashless crop transactions, and purchase agri-inputs with suppliers.

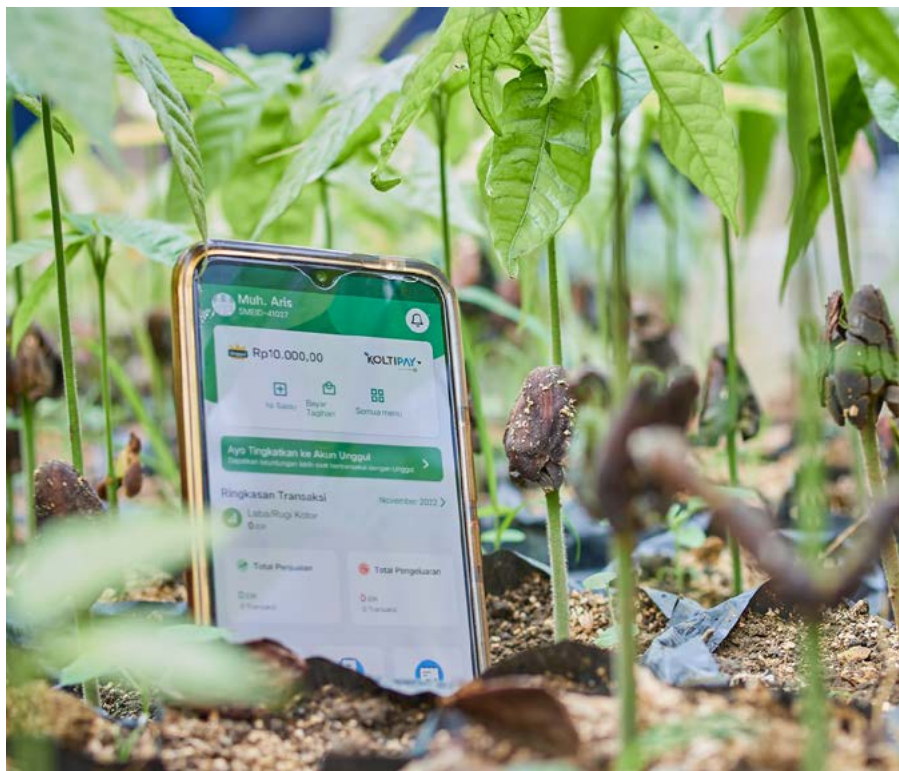
KoltiSkills, Koltiva's 'boots-on-the-ground' extension services support companies to implement sustainable sourcing efforts in the first mile of global value chains. KoltiSkills offers farm mapping and farm assessment for sustainable agricultural production, data-driven training with expert agronomists and specialists, extensive one-on-one coaching, and group training with smallholder producers. Our expert Training and Coaching Specialist provides coaching sessions tailored to the farmer's needs, including various topics in sustainable practices. Aim to improve the long-term health and productivity of the land while minimizing negative impacts on the environment, society, and economy. Supply Chain Mapping and Verification to meet upcoming EU Regulation.

Regional experience

- ✓ Asia and Pacific
- ✓ Europe
- ✓ Sub-Saharan Africa
- ✓ America and Caribbean

Your sector(s) experience:

- ✓ Energy and Climate
- ✓ Rural Development, Agriculture, Biodiversity, Seas
- ✓ Digitalisation/Digital Transformation



KoltiPay, digital finance feature that fully integrated into Koltiva's end-to-end ecosystem. (Source: Koltiva)

Expertise in RMMV institutional approaches

- ✓ Third-Party Monitoring
- ✓ Involving Target Groups / Project-Affected People
- ✓ Engaging other partners (e.g. other donors, NGOs/UN operating in the same area, researchers etc.)

Experience using RMMV tools/technologies and/or data sources

- ✓ (Remote) Management Information Systems (R/MIS) or Maintenance Management Systems
- ✓ Mobile Data Collection Tools
- ✓ Geospatial Tools & GIS
- ✓ Sensors/Smart Meters (Internet of Things)

For more info on the above categories

<https://www.kfw-entwicklungsbank.de/Service/Publications-Videos/Publications-by-topic/Digitalisation/Fact-Sheets/>

Contact

KOLTIVA AG
Baselstrasse 8
4532 Feldbrunnen
Switzerland

www.koltiva.com

PT KOLTIVA
RA Mampang Office, 6th floor,
Jl. Mampang Prapatan Raya, No. 66A-66B
Mampang Prapatan
South Jakarta, 12790
Indonesia

Luca Fischer, Program Manager Koltiva
luca.fischer@koltiva.com

Vega Welingutami, Media Relation &
Partnership Koltiva
vega.welingutami@koltiva.com



LiveEO

Helps supply chains turn deforestation-free with timely alerts based on satellite imagery



Name of Organisation

LiveEO GmbH

RMMV Tool(s) and/or Service(s) provided

LiveEO offers a variety of RMMV tools, all integrated into a single application. These include a Remote Management Information System consisting of an intuitive web application to display the results of our analysis and Mobile Data Collection Tools tools. Our monitoring service is based on the use of Earth Observation via satellites. We have a cloud infrastructure and automated processing pipelines in place to allow for processing of big data streams.

Description of your RMMV tool(s) and/or service(s)

LiveEO is an Earth Observation startup specialized in the provision of satellite-based monitoring services. We offer a range of services for remote site supervision and a forest monitoring suite to monitor forest health and detect deforestation. LiveEO continuously monitors forests and performs regular change detection analysis, enabling early identification of deforestation anywhere. Automated assessments deliver additional information about the affected areas, including the region, size, damage event date, and cause

indication. Historic and new deforestation data can verify that supply chains are not contributing to deforestation. Insights can be accessed from anywhere via a web interface. Our mobile app (Android/iOS), equipped for offline use has in-built and customizable documentation and reporting functions. The app supports field data collection and the documentation of monitoring activities. Monitoring tasks are automatically generated and assigned. Via our applications, we deliver user-specific alerts based on risk parametrization to highlight risk areas that require immediate attention.

Regional experience

- ✓ Asia and Pacific
- ✓ Europe
- ✓ America and Caribbean

Your sector(s) experience:

- ✓ Energy and Climate
- ✓ Water, Urban development & Mobility
- ✓ Digitalisation/Digital Transformation
- ✓ Other

Expertise in RMMV institutional approaches

- ✓ Monitoring led by Project Executing Agency
- ✓ Involving Target Groups/Project-Affected People
- ✓ Engaging other partners (e.g. other donors, NGOs/UN operating in the same area, researchers etc.)

Experience using RMMV tools/technologies and/or data sources

- ✓ (Remote) Management Information Systems (R/MIS) or Maintenance Management Systems
- ✓ Mobile Data Collection Tools
- ✓ Earth Observation via Satellites
- ✓ Geospatial Tools & GIS
- ✓ Big Data / Artificial Intelligence



Automated Deforestation Detection.
(Source: LiveEO)

For more info on the above categories

<https://www.kfw-entwicklungsbank.de/Service/Publications-Videos/Publications-by-topic/Digitalisation/Fact-Sheets/>

Project experience with KfW

We currently don't have any project experience yet with KfW. In the sector of International Cooperation, we are providing services to the Republic of Moldova under an agreement with the UNDP within the framework of the Project "Addressing the impacts of energy crisis and initiating solutions toward energy security and addressing energy poverty". LiveEO has been contracted to provide a continuous forest monitoring service aiming to provide an early identification of illegal cutbacks to support governmental authorities in the assessment of the relevant area and the implementation of countermeasures. The results will be integrated into a web and mobile applications while providing monthly updates.

Contact

LiveEO GmbH
Cuvrystraße 3-4
10997 Berlin

Piero Marlia
piero.marlia@live-eo.com

www.live-eo.com

LiveEO

Mainlevel Consulting AG

Mainlevel CONNECT Data Suite – Powerful data management made easy



Name of Organisation

Mainlevel Consulting AG

RMMV Tool(s) and/or Service(s) provided

- (Remote) Management Information System
- Mobile Data Collection Tools
- Geospatial Tools & GIS
- Monitoring & Evaluation Consultancy
- Digital Transformation Consultancy

Description of your RMMV tool(s) and/or service(s)

Mainlevel CONNECT offers you powerful data management features that are flexible and adaptable to your needs. This all-in-one data suite enables you to collect, analyse and report data for effective evidence-based project steering, learning and reporting.

Mainlevel CONNECT serves projects and organisations across the globe with their data management needs as

- Monitoring & Evaluation system
- Portfolio & Grant Management system
- Case Management system
- Education information system
- Natural resource management system

We have developed the software based on modern open-source technologies with modular components and flexible implementation scenarios. The mission: delivering Mainlevel CONNECT as best-fitting solution with fast time-to-market and reasonable total cost of ownership.

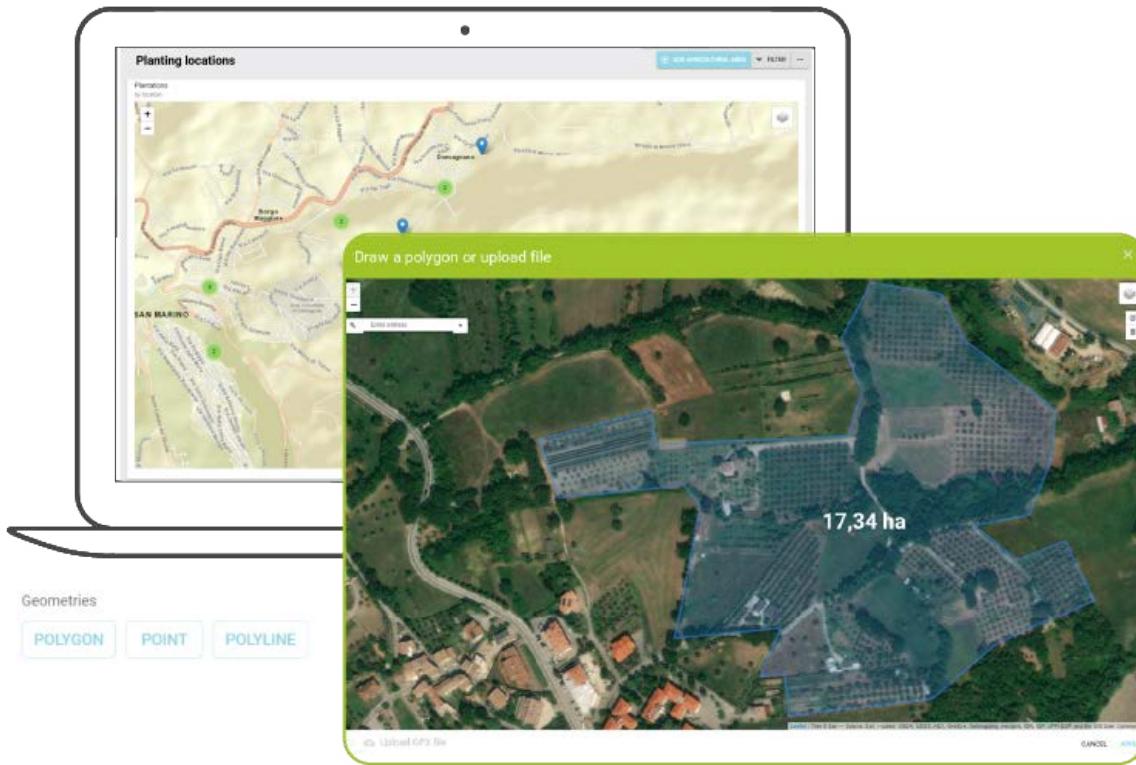
[Mainlevel CONNECT in 150 seconds](#)

Regional experience

- ✓ Asia and Pacific
- ✓ Europe
- ✓ Middle East and North Africa
- ✓ Sub-Saharan Africa
- ✓ America and Caribbean

Your sector(s) experience:

- ✓ Energy and Climate
 - ✓ Economic growth, Employment, Financial System Development
 - ✓ Rural Development, Agriculture, Biodiversity, Seas
 - ✓ Education & Vocation Training
 - ✓ Water, Urban development & Mobility
 - ✓ Governance, Peace, Fragility and Forced Displacement, Humanitarian Assistance
 - ✓ Health & Social Protection, Poverty
 - ✓ Digitalisation/Digital Transformation
-



Mainlevel CONNECT geographical features including automated area measurement.
(Source: Mainlevel Consulting AG)

Expertise in RMMV institutional approaches

- ✓ Monitoring led by Project Executing Agency
- ✓ Monitoring led by Implementation Consultant
- ✓ Third-Party Monitoring
- ✓ Involving Target Groups/Project-Affected People
- ✓ Engaging other partners (e.g. other donors, NGOs/UN operating in the same area, researchers etc.)

Experience using RMMV tools/technologies and/or data sources

- ✓ (Remote) Management Information Systems (R/MIS) or Maintenance Management Systems
- ✓ Mobile Data Collection Tools
- ✓ Geospatial Tools & GIS
- ✓ Collaboration Tools
- ✓ eLearning Tools
- ✓ Open Data Sources

For more info on the above categories

<https://www.kfw-entwicklungsbank.de/Service/Publications-Videos/Publications-by-topic/Digitalisation/Fact-Sheets/>

Project experience with KfW

- Development and Implementation of Remote Management Information System (RMIS) and Data Analytics Approaches in the LEE Department
- Development of Fact Sheets on Technical Tool Types and Data Sources

Contact

Mainlevel Consulting AG
Kölner Strasse 3
65760 Eschborn
Germany

www.mainlevel.de

Olaf Haasner
olaf.haasner@mainlevel.de

main
level **CONNECT**

RIWI

Real-time Interactive Worldwide Intelligence



Name of Organisation

Real-time Interactive Worldwide Intelligence (RIWI)

RMMV Tool(s) and/or Service(s) provided

Using web-intercept technology, RIWI delivers online surveys to respondents who can answer anonymously removing many of the social desirability biases prevalent in today's opinion polling. We can conduct surveys (baseline, endline), continuous monitoring, test messaging for assessment of knowledge, practices and attitudes, and randomized control experiments. Our ability to field thousands of surveys anywhere with internet access within weeks provides decision makers with actionable data.

Description of your RMMV tool(s) and/or service(s)

RIWI technology casts the widest net in any geography in order to reach the widest, most inclusive audience of public opinion. In doing so, we hear what people really think, want and observe. We reach these diverse survey audiences including the quiet voices who do not typically answer surveys or express their views on social media.

RIWI technology rapidly collects opinion data in every country around the world and displays the results in a secure, interactive Web dashboard in near real-time. We collect information in 229 countries and territories and in over 80 languages.

RIWI has expertise in documenting public and consumer attitudes, behaviors and observations using a proven, peer-reviewed research method patented by the Company. RIWI's technology enables the continuous capture of broad, randomized opinion data on an uninterrupted basis in any geography, rapidly gathering non-conditioned response data from any random respondent encounter on the Web. We can employ high security measures which ensures that no personally identifiable information is collected, stored, or transferred. Using RIWI data and interactive dashboards, clients are able to obtain high-quality data that is scientific in its approach.

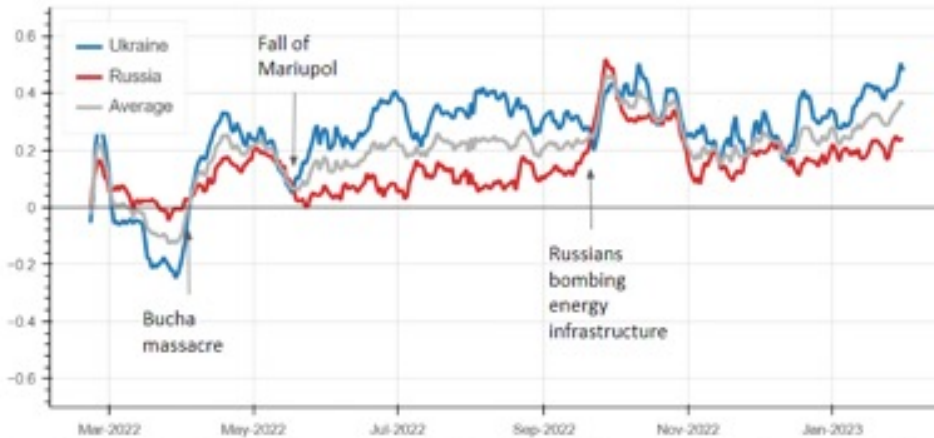
Regional experience

- ✓ Asia and Pacific
- ✓ Europe
- ✓ Middle East and North Africa
- ✓ Sub-Saharan Africa
- ✓ America and Caribbean

Your sector(s) experience:

- ✓ Economic growth, Employment, Financial System Development
 - ✓ Rural Development, Agriculture, Biodiversity, Seas
 - ✓ Education & Vocation Training
 - ✓ Water, Urban development & Mobility
 - ✓ Governance, Peace, Fragility and Forced Displacement, Humanitarian Assistance
 - ✓ Health & Social Protection, Poverty
 - ✓ Digitalisation/Digital Transformation
-

Ukraine v. Russia: Military Tension Score



Continuous data collection in Russia and Ukraine on military tensions. (Source: RIWI)

Note. Military Conflict Risk Index (Compass by RIWI x David Woo), Ukraine v. Russia, starting Feb. 15, 2022 and ongoing. 7-day moving average displayed. Respondents were asked Over the next few weeks, do you think that military tensions between Ukraine and Russia will be: with a 5-point response scale ranging from less intense (-2x), a little less intense (-1x), to the same (0x), to a little more intense (1x), to more intense (2x).

Expertise in RMMV institutional approaches

- ✓ Monitoring led by Project Executing Agency
- ✓ Monitoring led by Implementation Consultant
- ✓ Involving Target Groups/Project-Affected People

Experience using RMMV tools/technologies and/or data sources

- ✓ (Remote) Management Information Systems (R/MIS) or Maintenance Management Systems
- ✓ Mobile Data Collection Tools
- ✓ Geospatial Tools & GIS

For more info on the above categories

<https://www.kfw-entwicklungsbank.de/Service/Publications-Videos/Publications-by-topic/Digitalisation/Fact-Sheets/>

Contact

RIWI
180 Bloor St W suite 1000
Toronto
ON M5S 2V6
Canada

Natasha Hsi
natasha.hsi@riwi.com

www.riwi.com



Talk to Loop

Loop – Feedback and complaints reporting tool



Name of Organisation

Talk to Loop

RMMV Tool(s) and/or Service(s) provided

Feedback tool in local languages across input channels with open analysis of data in real time.

- Complaints reporting
- Sexual Exploitation and Abuse reporting
- Misconduct reporting

Description of your RMMV tool(s) and/or service(s)

Loop provides a way for organisations to engage directly, over time and across languages and other access barriers with communities, to: inform program design, adaptation and improvements as well as to measure impact and needs. With Loop you can close the feedback Loop efficiently and directly, across languages and input channels.

With Loop you can see real time data analytics.

Loop is a locally owned platform with training, communications and roll out support for your organisation.

We meet global best practice standards on feedback and safe reporting and can compliment monitoring and evaluation or other data collection mechanisms.

Sensitive feedback is referred through safe channels to the appropriate person in your organisation to respond to directly.

Data is updated on a Statistics page, in real time, which can be filtered and used to inform project course correction, communications activities and funding applications.

Regional experience

- ✓ Asia and Pacific
- ✓ Europe
- ✓ Middle East and North Africa
- ✓ Sub-Saharan Africa

Your sector(s) experience:

- ✓ Governance, Peace, Fragility and Forced Displacement, Humanitarian Assistance
- ✓ Health & Social Protection, Poverty
- ✓ Digitalisation/Digital Transformation
- ✓ Other

Expertise in RMMV institutional approaches

- ✓ Monitoring led by Project Executing Agency
- ✓ Third-Party Monitoring
- ✓ Involving Target Groups/Project-Affected People
- ✓ Engaging other partners (e.g. other donors, NGOs/UN operating in the same area, researchers etc.)

Experience using RMMV tools/technologies and/or data sources

- ✓ (Remote) Management Information Systems (R/MIS) or Maintenance Management Systems
- ✓ Mobile Data Collection Tools
- ✓ Crowdsourcing Tools Tools
- ✓ Collaboration Tools
- ✓ Open Data Sources



Engage with communities at talktoloop.org

For more info on the above categories

<https://www.kfw-entwicklungsbank.de/Service/Publications-Videos/Publications-by-topic/Digitalisation/Fact-Sheets/>

Contact

Talk to Loop
The Hague Humanity Hub
Fluwelen Burgwal 58. 2511 CJ
The Hague
Netherlands

www.talktoloop.org

Alex Ross
alex@talktoloop.org



The Cynefin Company

SenseMaker®



Name of Organisation

The Cynefin Company

RMMV Tool(s) and/or Service(s) provided

Data collection research tool and consultancy around complexity-informed theory, tools, and methods.

Description of your RMMV tool(s) and/or service(s)

SenseMaker® is a distributed ethnographic, complexityinformed, mixed-methods research tool used to capture voices at scale.

With the persuasive and contextual power of narrative alongside the comfort and objectivity of numbers, SenseMaker® helps monitor shifts and changes in real-time to help build citizen-led, context-informed interventions.

Regional experience

- ✓ Asia and Pacific
- ✓ Europe
- ✓ Middle East and North Africa
- ✓ America and Caribbean

Your sector(s) experience:

- ✓ Energy and Climate
- ✓ Economic growth, Employment, Financial System Development
- ✓ Rural Development, Agriculture, Biodiversity, Seas
- ✓ Education & Vocation Training
- ✓ Water, Urban development & Mobility
- ✓ Governance, Peace, Fragility and Forced Displacement, Humanitarian Assistance
- ✓ Health & Social Protection, Poverty
- ✓ Digitalisation/Digital Transformation
- ✓ Other

Expertise in RMMV institutional approaches

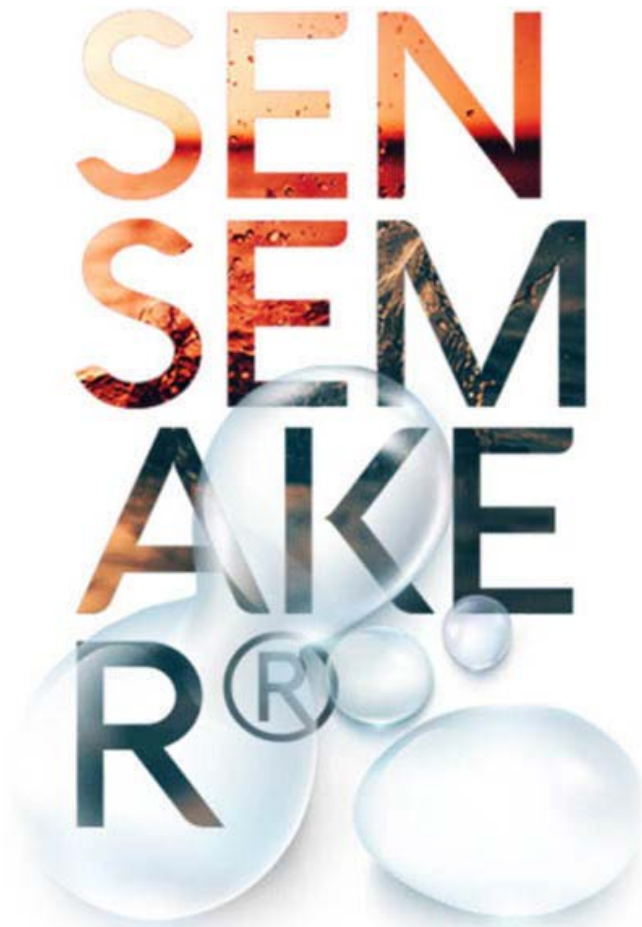
- ✓ Monitoring led by Implementation Consultant
- ✓ Third-Party Monitoring
- ✓ Involving Target Groups/Project-Affected People
- ✓ Engaging other partners (e.g. other donors, NGOs/UN operating in the same area, researchers etc.)

Experience using RMMV tools/technologies and/or data sources

- ✓ Mobile Data Collection Tools
- ✓ Crowdsourcing Tools Tools
- ✓ Building Information Modeling
- ✓ Collaboration Tools
- ✓ Open Data Sources
- ✓ Big Data/Artificial Intelligence

For more info on the above categories

<https://www.kfw-entwicklungsbank.de/Service/Publications-Videos/Publications-by-topic/Digitalisation/Fact-Sheets/>



Sensemaker software for narrative research
(Source: The Cynefin Company)

Contact

The Cynefin Company
Plas Eirias Business Centre
Abergele Road
Colwyn Bay
Gwynedd
Wales
LL29 8BF
United Kingdom

Emma Jones
emma.jones@thecynefin.co

<https://thecynefin.co/>

<https://thecynefin.co/sensemaker/>



The Open Data Company

Reach more Impact using Open Aid Data on the AIDA platform



Name of Organisation

The Open Data Company

RMMV Tool(s) and/or Service(s) provided

The Aid Information Data Analytics (AIDA) Platform

Description of your RMMV tool(s) and/or service(s)

AIDA is a data services platform for professionals working in the aid chain who are looking for an easy way to use open aid data. We have made all open aid data published according to the International Aid Transparency Initiative (IATI) available to everyone in a searchable way using our smart filtering options.

Organisations are also able to publish data in compliance with the IATI Standard in just a few clicks. AIDA allows organisations to connect to the IATI Registry to become an agent of transparency and easily meet donor requirements. Organisations save time with our ready-to-use templates to map and populate their datasets. AIDA automatically validates the dataset. The AIDA validator retrieves omissions and errors in your data and generates a report to help correct your dataset. With the explore features, they can filter and analyse all available data which is available in visualised formats to aid their analysis.

We built this platform for aid professionals active in the aid chain and who need access to aid data for data management, analysis and visualisation.

Regional experience

- ✓ Asia and Pacific
- ✓ Europe
- ✓ Middle East and North Africa
- ✓ Sub-Saharan Africa
- ✓ America and Caribbean

Your sector(s) experience:

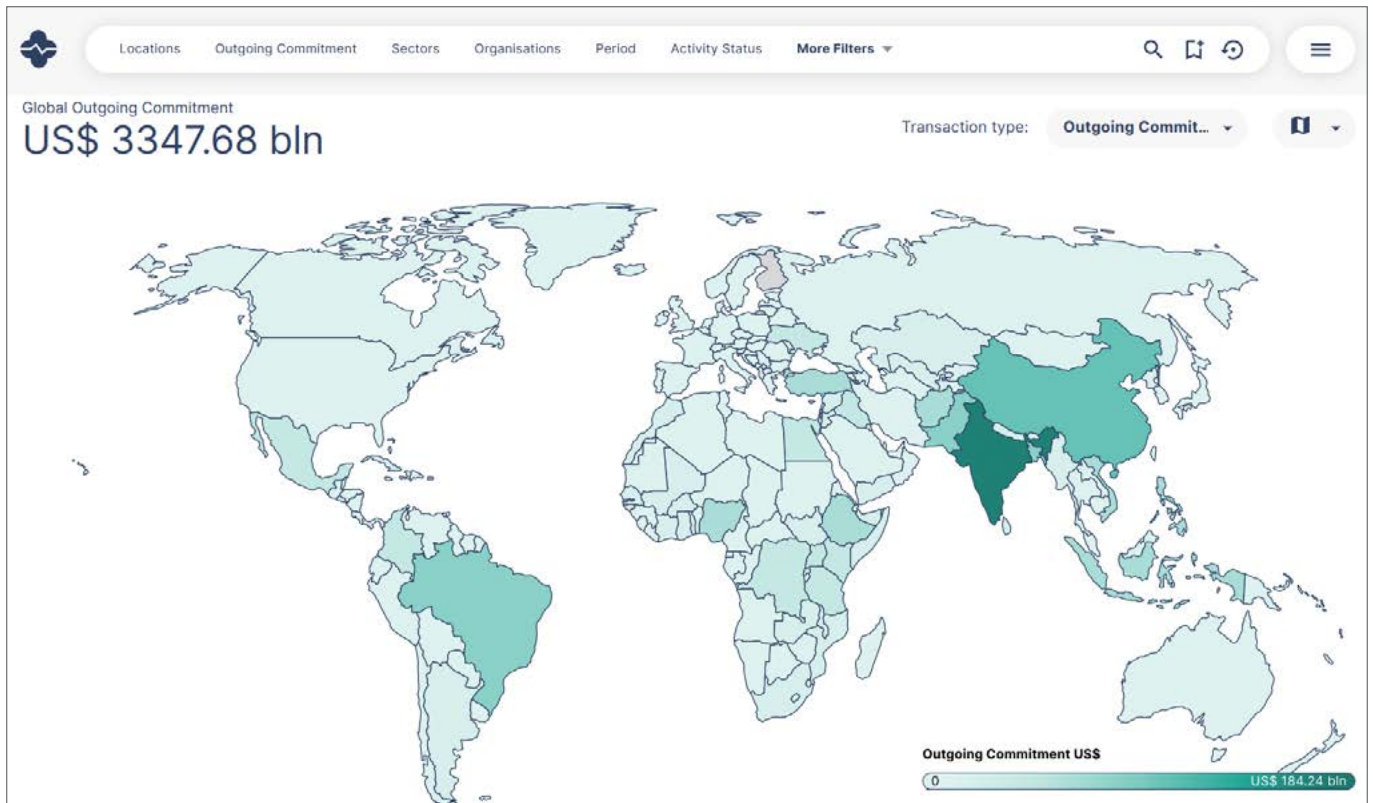
- ✓ Economic growth, Employment, Financial System Development
- ✓ Governance, Peace, Fragility and Forced Displacement, Humanitarian Assistance
- ✓ Health & Social Protection, Poverty
- ✓ Digitalisation/Digital Transformation

Expertise in RMMV institutional approaches

- ✓ Monitoring led by Project Executing Agency
- ✓ Monitoring led by Implementation Consultant
- ✓ Third-Party Monitoring
- ✓ Engaging other partners (e.g. other donors, NGOs/UN operating in the same area, researchers etc.)

Experience using RMMV tools/technologies and/or data sources

- ✓ (Remote) Management Information Systems (R/MIS) or Maintenance Management Systems
- ✓ Mobile Data Collection Tools
- ✓ Building Information Modeling
- ✓ Collaboration Tools
- ✓ Open Data Sources
- ✓ Big Data/Artificial Intelligence



Sector overview on the Aid Information Data Analytics (AIDA) Platform showing dedicated expenditure per sector. (Source: The Open Data Company)

For more info on the above categories

<https://www.kfw-entwicklungsbank.de/Service/Publications-Videos/Publications-by-topic/Digitalisation/Fact-Sheets/>

Contact

The Open Data Company B.V.
 Herengracht 449a
 1017 BR Amsterdam
 The Netherlands
 Maaïke Blom
maaïke@aida.tools

aida.tools/support



TolaData GmbH

A digital tool making M&E simple, effective and impactful for donors and their partners



Name of Organisation

TolaData GmbH

RMMV Tool(s) and/or Service(s) provided

TolaData simplifies project monitoring and management so you can remotely track, monitor and report on all your projects in one comprehensive platform. TolaData offers a range of complimentary services including data entry, consultancy, online training, and custom feature builds. Our tool is used by more than 100 clients to remotely track and manage thousands of projects worldwide.

Description of your RMMV tool(s) and/or service(s)

TolaData is a cloud-based remote monitoring and management platform. No installation is required, facilitating a rapid deployment of the platform. It is ready for immediate use and additional customisations can be developed.

TolaData has many features to support RMMV including:

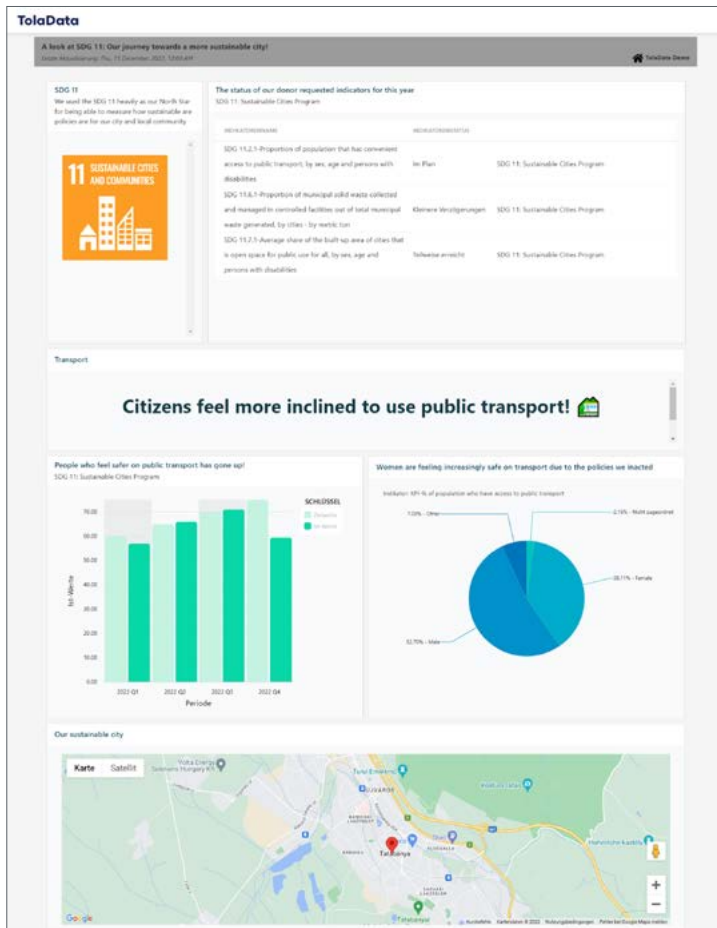
- End-to-end indicator management with tools for indicator planning, data collection, monitoring results, and real time updates.
- Aggregation of results across projects and portfolios.
- Configurable dashboards for visualising and reporting results that can be shared internally and externally.
- Activity planning and management tools with approval workflows, budget tracking, stakeholder management, document sharing and more.
- A shared work space facilitating collaboration with clear permissions management.
- Seamless integration with third party tools (e.g. KoboToolbox, ONA, Excel) for data collection and processes that harmonise data from different sources.
- API connectors
- Configurable exports
- IATI reporting

Regional experience

- ✓ Asia and Pacific
- ✓ Europe
- ✓ Middle East and North Africa
- ✓ Sub-Saharan Africa
- ✓ America and Caribbean

Your sector(s) experience:

- ✓ Energy and Climate
 - ✓ Economic growth, Employment, Financial System Development
 - ✓ Rural Development, Agriculture, Biodiversity, Seas
 - ✓ Education & Vocation Training
 - ✓ Water, Urban development & Mobility
 - ✓ Governance, Peace, Fragility and Forced Displacement, Humanitarian Assistance
 - ✓ Health & Social Protection, Poverty
 - ✓ Digitalisation/Digital Transformation
-



Users can create dashboards for reporting results to internal and external stakeholders. (Source: TolaData GmbH)

Expertise in RMMV institutional approaches

- ✓ Monitoring led by Project Executing Agency
- ✓ Monitoring led by Implementation Consultant
- ✓ Third-Party Monitoring
- ✓ Involving Target Groups/Project-Affected People
- ✓ Engaging other partners (e.g. other donors, NGOs/UN operating in the same area, researchers etc.)

Experience using RMMV tools/technologies and/or data sources

- ✓ (Remote) Management Information Systems (R/MIS) or Maintenance Management Systems
- ✓ Mobile Data Collection Tools
- ✓ Cameras (Terrestrial Observation)
- ✓ Collaboration Tools
- ✓ eLearning Tools
- ✓ Open Data Sources

For more info on the above categories

<https://www.kfw-entwicklungsbank.de/Service/Publications-Videos/Publications-by-topic/Digitalisation/Fact-Sheets/>

Contact

TolaData GmbH
 Ringbahnstr. 32-34
 12099 Berlin
 Germany

www.toladata.com

Malte Höpfner
malte@toladata.com

TolaData

Verify.earth

Your digital MRV for nature



Name of Organisation

Verify.earth GmbH

RMMV Tool(s) and/or Service(s) provided

Explore your projects digitally - with space-borne intelligence and ground-sourced

Description of your RMMV tool(s) and/or service(s)

We measure the environmental impact of sourcing sites and critical projects, empowering project developers, supply chain owners, and local communities to become nature positive and comply with regulatory requirements.

Our data layers are solely derived from different geospatial sources and enhanced with crowd-sourced data collection tools.

Together, our digital tech stack provides

- spatial view of several nature parameters,
- precise location information based on ground-sourced location-data and AI-driven feature detection,
- picture uploads,
- household surveys (feature is under development)

We have built geospatial data-based maps and indices that measure key natural capital assets such as forest, soils, mangroves and water as well as changes and disturbances to those ecosystems (e.g. depletion of water, land use changes)

Regional experience

- ✓ Asia and Pacific
- ✓ America and Caribbean

Your sector(s) experience:

- ✓ Rural Development, Agriculture, Biodiversity, Seas

Expertise in RMMV institutional approaches

- ✓ Monitoring led by Implementation Consultant
- ✓ Third-Party Monitoring
- ✓ Involving Target Groups/Project-Affected People
- ✓ Engaging other partners (e.g. other donors, NGOs/UN operating in the same area, researchers etc.)

Experience using RMMV tools/technologies and/or data sources

- ✓ (Remote) Management Information Systems (R/MIS) or Maintenance Management Systems
- ✓ Mobile Data Collection Tools
- ✓ Cameras (Terrestrial Observation)
- ✓ Earth Observation via Satellites
- ✓ Geospatial Tools & GIS
- ✓ Big Data/Artificial Intelligence

For more info on the above categories

<https://www.kfw-entwicklungsbank.de/Service/Publications-Videos/Publications-by-topic/Digitalisation/Fact-Sheets/>



Automated field boundary recognition of cotton fields in Madhya Pradesh, India.
(Source: verify.earth GmbH)

Contact

Verify.earth GmbH
Floraweg 9
8810 Horgen
Switzerland

(and an office as Earth Analytics India Pvt Ltd
in Mumbai, India)

Michael Anthony
michael@verify.earth

www.linkedin.com/company/verifyearth



WeRobotics

Flying Labs Network, the global network of local drone & data experts for social good



Name of Organisation

WeRobotics

RMMV Tool(s) and/or Service(s) provided

- Responsible and ethical drone data acquisition services
- Drone data processing and analysis services
- Drone and GIS/data capacity strengthening and professional training for your local partners
- Community engagement for drone data acquisition

Description of your RMMV tool(s) and/or service(s)

Collaborating with Flying Labs allows you to tap into a global network of local experts offering responsible and ethical drone and data services and training in 35+ countries in Africa, Latin America and Asia/Pacific for your RMMV needs.

Focusing on the humanitarian, health, environment and development sectors, Flying Labs strengthens local-level capacity and tech expertise, implement sustainable drone and data solutions within communities and for local and international partners. Through their work, they promote safe, responsible, ethical and locally-led drone and data services.

Flying Labs are locally-led and self-financed. They are hosted by existing local organizations and remain financially independent by offering their own training and professional services to local governments, businesses, NGOs, etc.

Flying Labs share their learnings and experiences across the Flying Labs Network to catalyze positive impact. The Network is co-created and facilitated by WeRobotics.

Regional experience

- ✓ Asia and Pacific
- ✓ Sub-Saharan Africa
- ✓ America and Caribbean

Your sector(s) experience:

- ✓ Energy and Climate
- ✓ Rural Development, Agriculture, Biodiversity, Seas
- ✓ Education & Vocation Training
- ✓ Water, Urban development & Mobility
- ✓ Governance, Peace, Fragility and Forced Displacement, Humanitarian Assistance
- ✓ Health & Social Protection, Poverty
- ✓ Digitalisation/Digital Transformation

Expertise in RMMV institutional approaches

- ✓ Third-Party Monitoring

Experience using RMMV tools/technologies and/or data sources

- ✓ Drones/UAV (Airborne Observation)
 - ✓ Geospatial Tools & GIS
-



Flying Labs experts at work.
(Source: WeRobotics)

For more info on the above categories

<https://www.kfw-entwicklungsbank.de/Service/Publications-Videos/Publications-by-topic/Digitalisation/Fact-Sheets/>

Contact

Flying Labs Network, facilitated by WeRobotics

werobotics.org

US Head Office
209 Orange Street
Wilmington, DE 19801
USA

Swiss Head Office
Rue d'Italie 11
1204 Geneva
Switzerland

Sonja Betschart
humans@werobotics.org



KfW

KfW Development Bank

Palmengartenstrasse 5–9
60325 Frankfurt am Main, Germany

Phone: +49 69 7431 0

Fax: +49 69 7431 2944

www.kfw.de

As of March 2023

Supported by



Federal Ministry
for Economic Cooperation
and Development

